



# ARMADA CODEX™

MODULAR MAPS



## DEMO

# NERO FREIGHT HAULER

Ryan Wolfe

04:01

# 0-hr: Nero - demo document

by Ryan Wolfe of "zero hour" art & technology

0-hr.com

Copyright © 2022 by Ryan Wolfe

This material may not be distributed without permission of the author.

The purpose of this document is to show you what you can expect should you choose to invest in this issue of the 0-hr Armada Codex. This issue presents the Nero-class cargo ship, which is the first in a new line of capital ships built with reusable map sections.

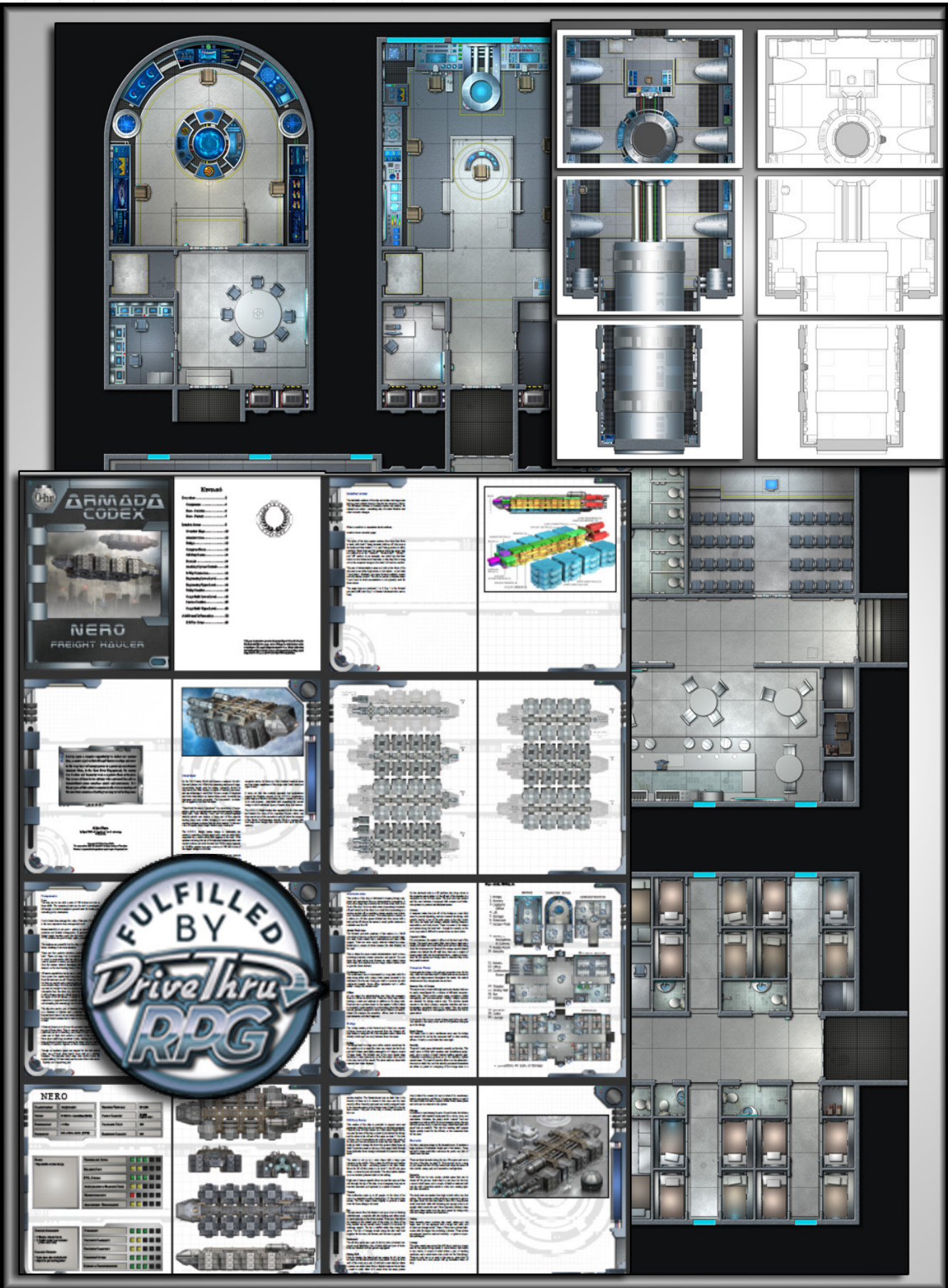
The product consists of a main book, map pages book, and uncut map images. Specifically, this is what is shown in this brief demo document:

- **Page 2 (left): Main Book.** An overview of the ship, components, and statistics is provided. The stats are generic descriptions and not from any particular game system. Each area of each vessel is enumerated and described. Rendered images are included throughout.
- **Page 2 (upper right): Map Book.** The map book provides tactical maps (1 inch = 5 ft.) for the interior areas of the ships. The pages are designed to be printed out and laid edge to edge. Layers are used so that certain map elements (like the grid, cargo, or the black and white version of the map) may be toggled on and off as desired.
- **Page 2 (back): Uncut Maps.** Complete deckplans are presented in four poster-sized images, layered so that the grid, black and white version, and so on can be toggled on or off. It includes a light background good for printing, and a dark background good for display on a computer or with a projector. Single-layer jpeg images are also included for easier VTT use.
- **Page 3:** This is a sample map page. The layers are live in this demo document.
- **Page 4:** Displayed here is a sample of some art from the main book.
- **Page 5:** This is a copy of the product overview from the sales web page.

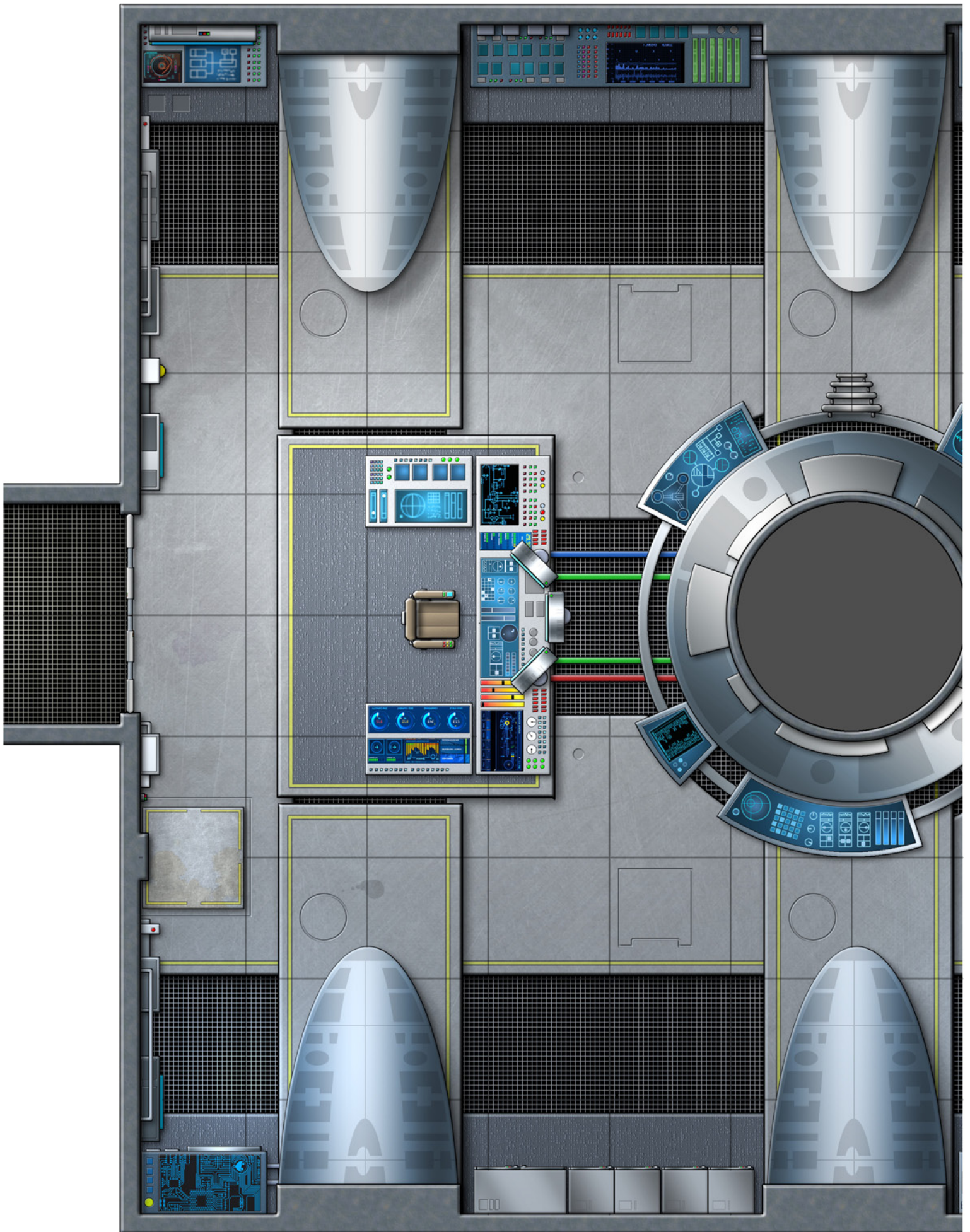


Thank you for taking the time to explore this product line. I hope that these ships can find a place in your fleet!



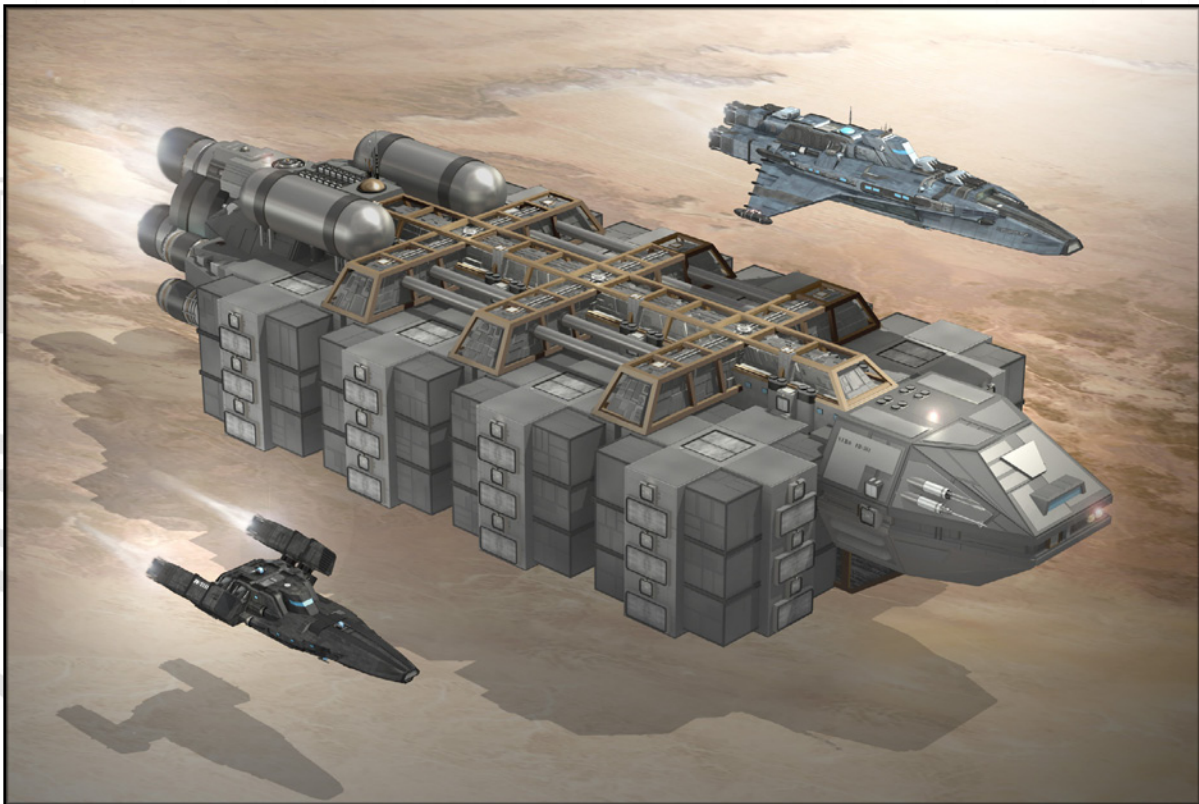
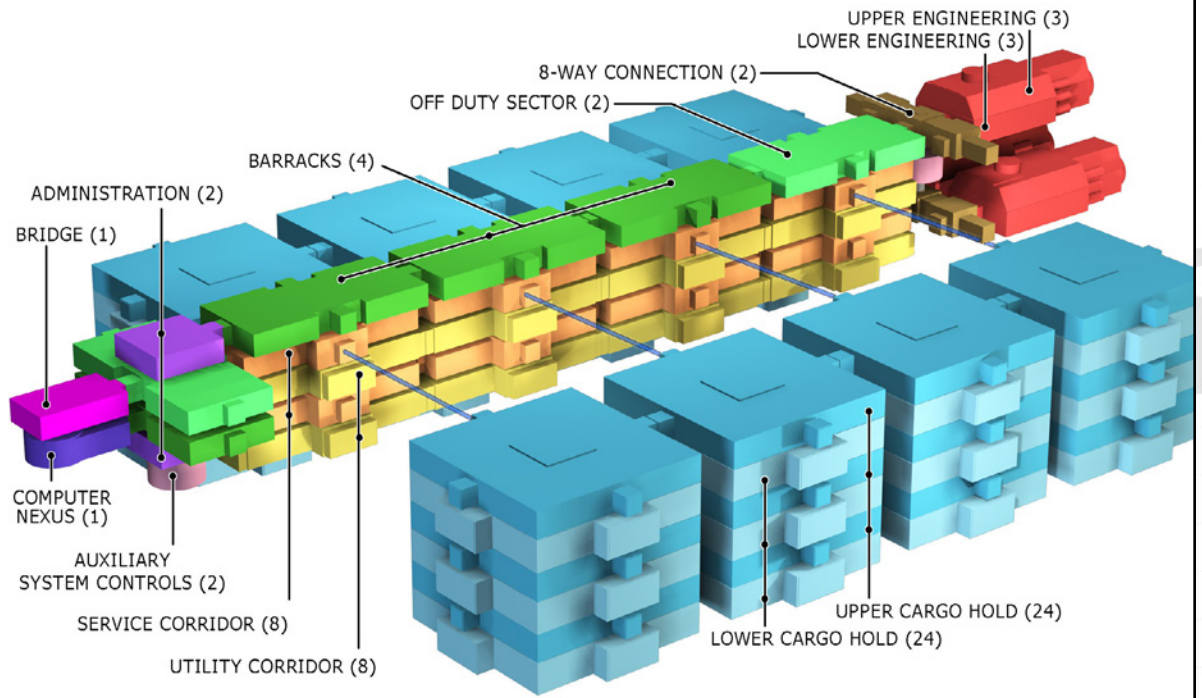
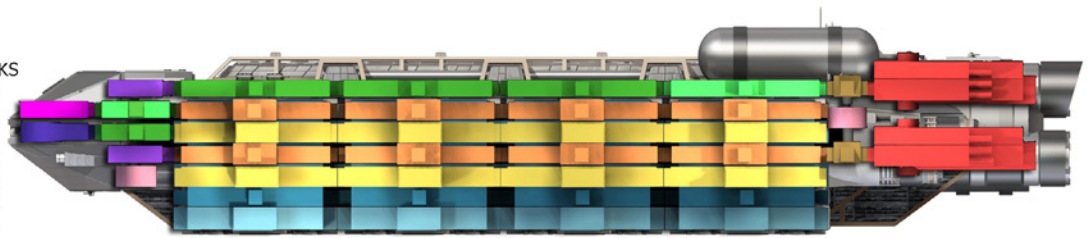








DECKS  
7  
6  
5  
4  
3  
2  
1



## 0-hr Armada Codex

# Nero

Designed for the *Near-Earth Recovery Operations* consortium to help rebuild the homeworld, the Nero-class freight hauler is a massive, form-follows-function, brick of a ship. At 800 feet stem to stern, it features eight cargo holds, each six stories high, and can carry up to 280 crew and passengers. This ship can haul 30,000 register tons of cargo neatly stored in the latest Z.E.T.A cargo containers, and a lot more in loose or liquid cargo.

The Nero deckplans are built from large, reusable, modules that will be expanded upon in future capital ship and station projects. Because a couple of cargo hold sections are used to represent multiple levels and multiple holds, extra pages with crates and containers are provided to cut out and arrange within the holds as desired. As a bonus, the holds can be used as a stand-alone storage facility and overview maps and renderings for this option are included.

The Nero package contains several highly detailed, layered PDF files:

- Main Book
  - 26 page PDF file detailing the interior areas of the ship.
  - Contains rendered scenes as well as orthographic views.
  - Includes system independent statistics designed for easy adaptation to your game of choice.
  - Background, art, and text are on different layers for custom display and printing.
- Map Pages
  - 77 page PDF file containing complete interior maps and instructions for assembly.
  - Miniature-scale maps for tactical combat with an optional 1 inch = 5 ft grid.
  - Divided into pages for easy printing in full color or printer-friendly black and white.
  - Selectable layers include: grid, black & white version, and optional cargo.
  - Also two pages of crates and cargo containers to cut out and put into the holds.
- Uncut Map Images
  - Four PDF files containing 24x36" images of the deckplan sections.
  - Select either a light or dark background (for printing or projection/display).
  - Includes layers for grid, black & white version, optional cargo, and background choice.
  - Flat jpeg images, grid-aligned, on a dark background are also provided for use on screen.

Sample document and art, as well as poster maps and matching miniatures, are available at **0-hr.com**.

Thank you for checking out the Nero-class freight hauler. Let it carry your campaign to new heights!