



ARMADA CODEX™



PANTHARI CRUISER

Ryan Wolfe

01:17

0-hr: Panthari - demo document

by Ryan Wolfe of “zero hour” art & technology

0-hr.com

Copyright © 2023 by Ryan Wolfe

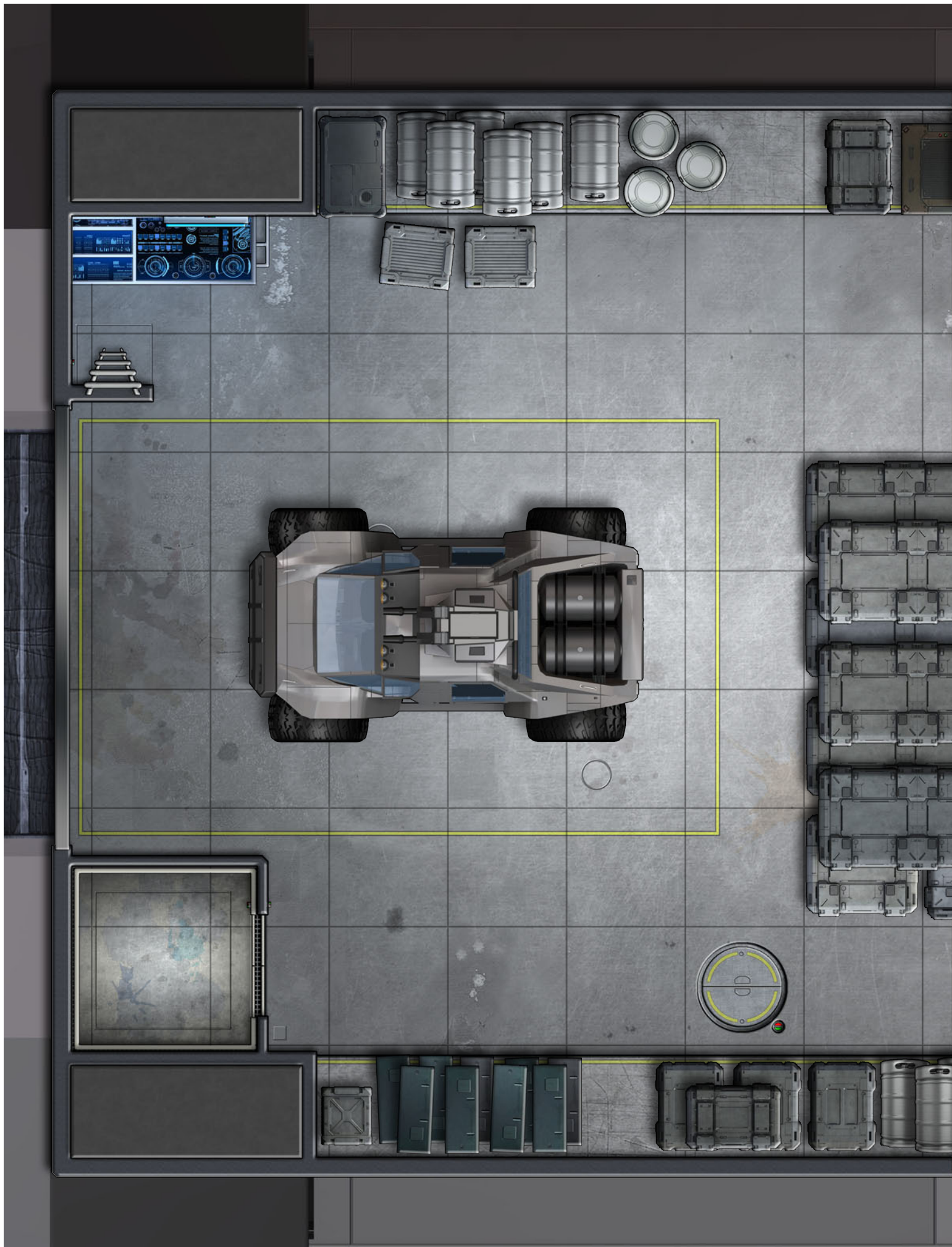
This material may not be distributed without permission of the author.

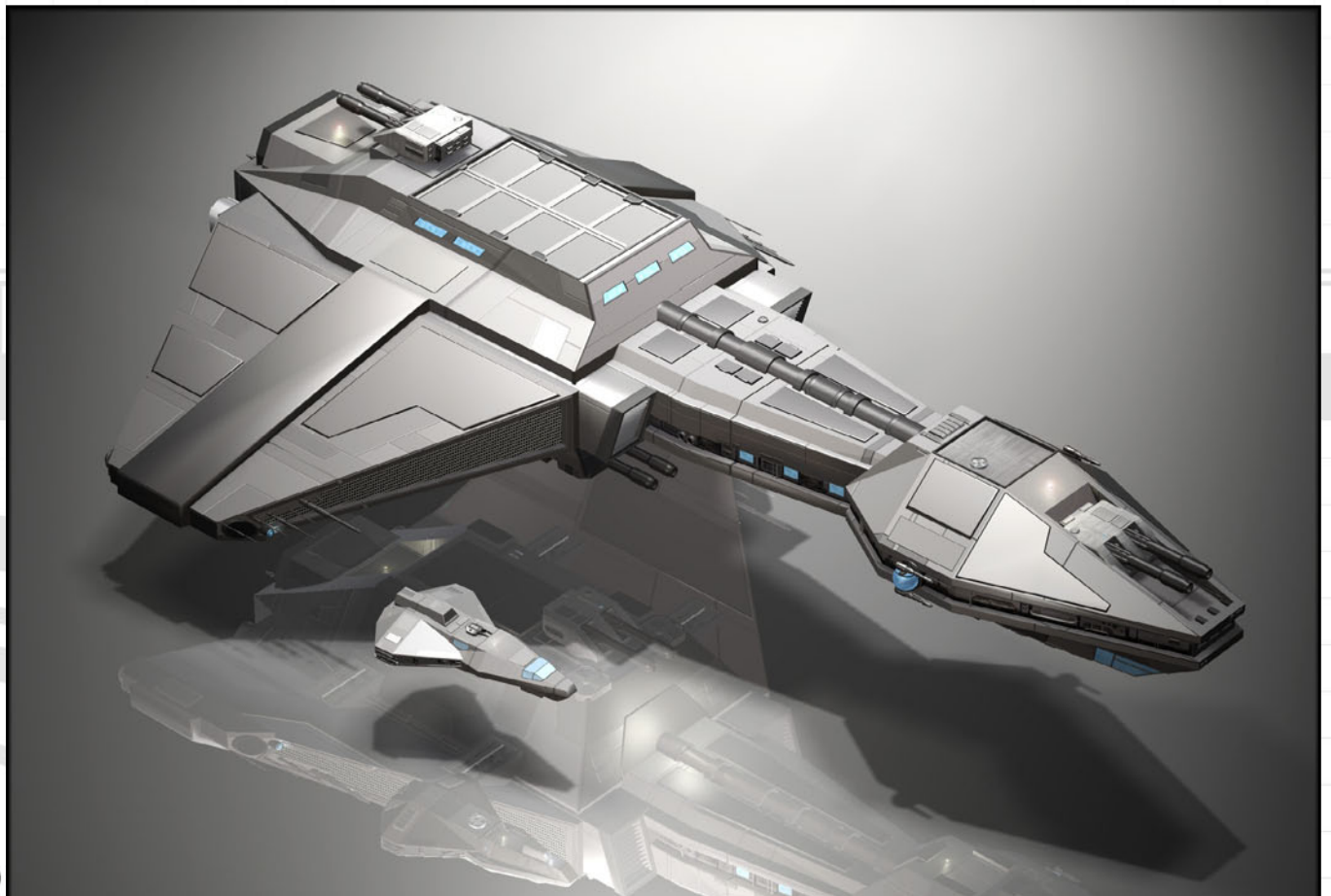
The purpose of this document is to show you what you can expect should you choose to invest in this issue of the 0-hr Armada Codex. This issue presents the Panthari Cruiser and the Luna-class ship's boat it carries.

The product consists of a main book, map pages book, and uncut map images. Specifically, this is what is shown in this brief demo document:

- **Page 2 (lower left): Main Book.** An overview of the ship, components, and statistics is provided. The stats are generic descriptions and not from any particular game system. Each area of the vessel is enumerated and described. Rendered images are included throughout.
- **Page 2 (right): Map Book.** The map book provides tactical maps (1 inch = 5 ft.) for the interior areas of the ships. The pages are designed to be printed out and laid edge to edge. Layers are used so that certain map elements (like the grid, cargo, or the black and white version of the map) may be toggled on and off as desired.
- **Page 2 (top): Uncut Maps.** Complete deckplans are presented in a single giant image, layered so that the grid, black and white version, and so on can be toggled on or off. It includes a light background good for printing, and a dark background good for display on a computer or with a projector. Single layer jpeg images are also included for easy VTT use.
- **Page 3:** This is a sample page from the map book. The layers are live in this demo document.
- **Page 4:** Displayed here is a sample of some rendered art from the main book.
- **Page 5:** This is a copy of the product overview from the sales web page.

Thank you for taking the time to explore this product line. I hope that these ships can find a place in your fleet!





0-hr Armada Codex

Panthari

The Panthari design is the latest product of the Shipwrights of Syros 2, which has quickly become the preeminent design house in the Nexan Theocracy. Using the technologies developed for the Chimaerus and Trinity designs, the Panthari cruiser is a medium-large warship on par with ConFederation designs like the Mourning Wolf and Morningstar.

This ship has six crew cabins and a pair of barracks with ten berths in each. She is heavily armed with a trio of manned plasma cannon turrets and a trio of larger main gun emplacements. Panthari carries a Luna-class ship's boat, which is also well-armed and has seats for a dozen people. A military-grade Rottweiler recon vehicle and a pair of multi-function drop pods (for boarding actions, planetary assault, or emergency escape) support additional mission profiles.

The Panthari package contains several highly detailed PDF files and images:

- Main Book
 - 22 page PDF file detailing the interior areas of the ship and its capabilities.
 - Contains 3D rendered scenes as well as orthographic views.
 - Background, art, and text are on different layers for custom display and printing.
- Map Pages
 - 28 page PDF file containing complete interior maps at 1 inch = 5 foot scale.
 - Divided into pages for easy printing in full color or printer-friendly black and white.
 - Selectable layers include: 1-inch grid, black & white version, and optional cargo/vehicles.
- Uncut Map Images
 - A layered, single-page PDF file containing a 35x56 inch image of the deckplans.
 - A text-free 150 dpi jpeg image, grid-aligned, on a dark background is provided for VTT use.
- Starfinder Statistics
 - Custom Starfinder stat sheets are provided for Panthari and Luna:
 - Panthari: a tier 14 cruiser
 - Luna-class ship's boat: a tier 5 shuttle

Sample documents and art, as well as poster maps, ships miniatures, and a whole fleet of additional Starfinder sheets (including form-fillable and black-and-white versions), are available at **0-hr.com**.

Thank you for looking over the Panthari cruiser. I hope that this ship can help bring your campaign to life!