



# ARMADA CODEX™

REFIT



## PRAETORIAN PATROL BOAT



Ryan Wolfe

02:08



# 0-hr: Praetorian - demo document

by Ryan Wolfe of "zero hour" art & technology

0-hr.com

Copyright © 2021 by Ryan Wolfe

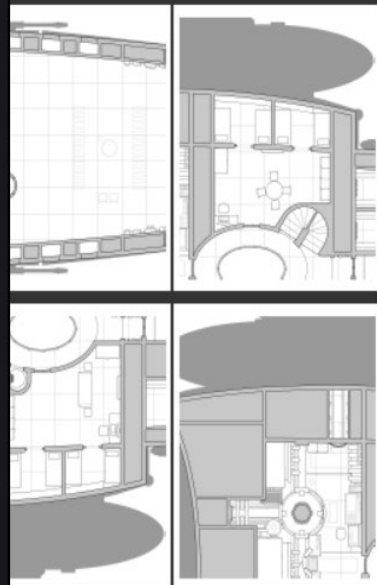
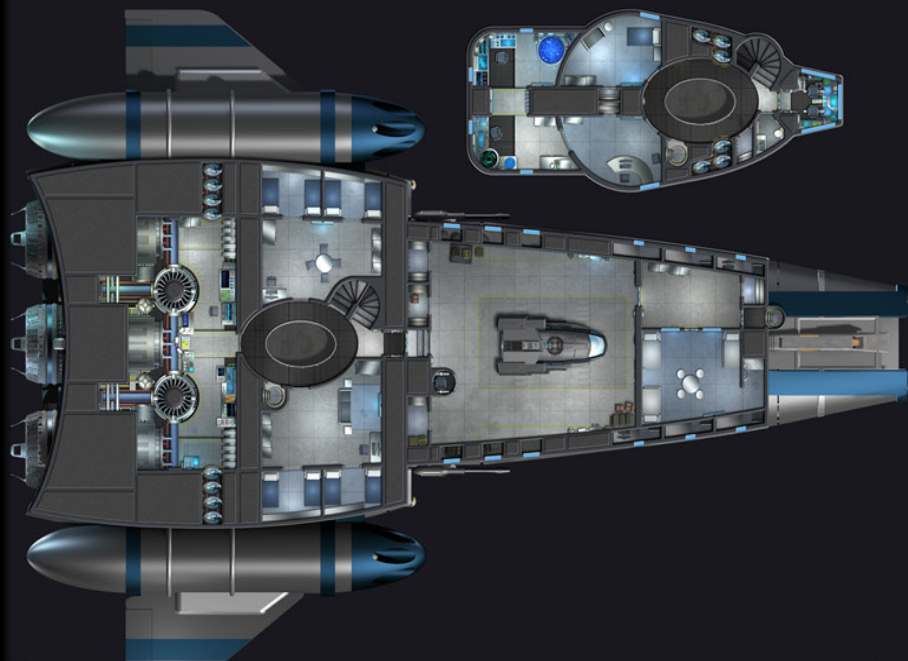
This material may not be distributed without permission of the author.

The purpose of this document is to show you what you can expect should you choose to invest in this issue of the 0-hr Armada Codex. This issue presents the Praetorian-class patrol boat.

The product consists of a main book, map pages book, and uncut map images. Specifically, this is what is shown in this brief demo document:

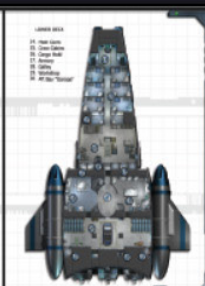
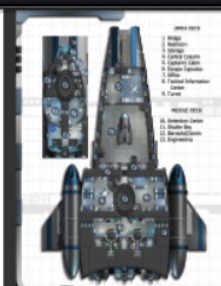
- **Page 2 (lower left): Main Book.** An overview of the ships, components, and statistics is provided. The stats are generic descriptions and not from any particular game system. Each area of each vessel is enumerated and described. Rendered images are included throughout.
- **Page 2 (right): Map Book.** The map book provides tactical maps (1 inch = 5 ft.) for the interior areas of the ships. The pages are designed to be printed out and laid edge to edge. Layers are used so that certain map elements (like the grid, cargo, or the black and white version of the map) may be toggled on and off as desired.
- **Page 2 (upper left): Uncut Maps.** Complete deckplans are presented in a single giant image, layered so that the grid, black and white version, and so on can be toggled on or off. It includes a light background good for printing, and a dark background good for display on a computer or with a projector. Single layer jpeg images are also included for easy VTT use.
- **Page 3:** This is a sample page from the map book. The layers are live in this demo document.
- **Page 4:** On this page is some of the art from the main book.
- **Page 5:** This is a copy of the product overview from the sales web page.

Thank you for taking the time to explore this product line. I hope that these ships can find a place in your fleet!



**Komati**

Model:	
Manufacturer:	
Year Built:	
Length:	
Width:	
Height:	
Weight:	
Armament:	
Speed:	
Range:	
Notes:	

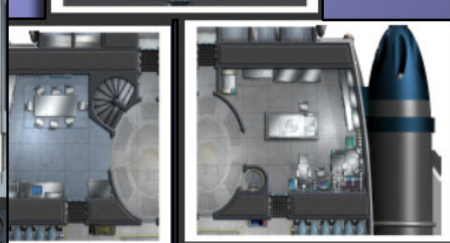
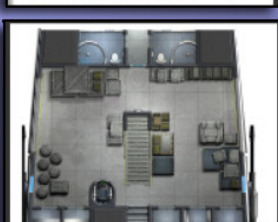
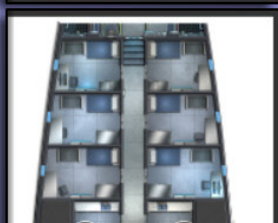
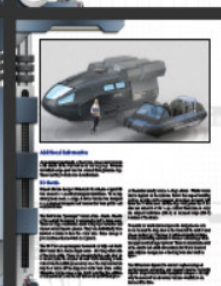
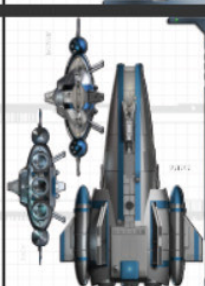
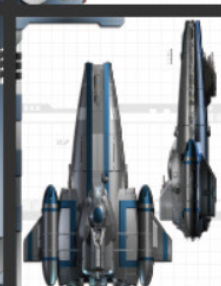


**PRÆTORIAN**

The Praetorian Patrol Boat is a medium-sized vessel designed for long-range patrol and reconnaissance. It features a sleek, aerodynamic hull and a powerful engine system that allows it to maintain high speeds over long distances. The vessel is equipped with advanced sensors and communication systems, making it a valuable asset for the fleet.

**PRÆTORIAN**

Model:	
Manufacturer:	
Year Built:	
Length:	
Width:	
Height:	
Weight:	
Armament:	
Speed:	
Range:	
Notes:	











## 0-hr Armada Codex

# Praetorian

This project presents the Praetorian-class patrol boat. Based on the old Grendel-class transport, this version is larger, heavily armed, and well equipped for exploration and combat. The ship has seven individual cabins plus eight more bunks divided between a pair of dorms or barracks. This allows for a standard crew of 4 to 7 plus a contingent of marines, passengers, or additional crew.

Praetorian has a small cargo hold, a shuttle bay, and an aft “garage” area. She comes standard with a K-6 passenger shuttle in the bay and a Stratos 7000 air car in the garage. Other amenities include a brig, tactical information center, and techshop with a medical table. Weapons range from a trio of turrets, to large front-mounted guns, to side-mounted torpedo launchers. All told, this is a formidable ship well suited to extended patrol and policing duties in the hands of the authorities – or as a ship of exploration, adventure, or piracy in the hands of civilians.

The Praetorian package contains three highly detailed, layered PDF files:

- Main Book
  - o 17 page PDF file detailing the interior areas of the ship.
  - o Contains 3D rendered scenes as well as orthographic views.
  - o Includes system independent statistics designed for easy adaptation to your game of choice.
  - o Background, art, and text are on different layers for custom display and printing.
- Map Pages
  - o 25 page PDF file containing complete interior maps and instructions for assembly.
  - o Miniature-scale maps for tactical combat with an optional 1 inch = 5 ft grid.
  - o Divided into pages for easy printing in full color or printer-friendly black and white.
  - o Selectable layers include: grid, black & white version, and optional cargo.
- Uncut Map Image
  - o A PDF file containing large, uncut images of the deckplans for the ships.
  - o Includes a 40x36 inch image of the complete Praetorian patrol boat map.
  - o Select either a light or dark background (for printing or projection/display).
  - o Includes layers for grid, black & white version, optional cargo, and background choice.
  - o A flat jpeg image, grid-aligned, on a dark background is also provided for use on screen.

Sample document and art, as well as poster maps and matching miniatures, are available at **0-hr.com**.

Thank you for looking over Praetorian. I hope that this ship can help bring your campaign to life!