



# ARMADA CODEX™

DEMO



# VÄLHALLA TRIO

Ryan Wolfe

01:18

# 0-hr: Valhalla Trio - demo document

by Ryan Wolfe of “zero hour” art & technology

0-hr.com

Copyright © 2023 by Ryan Wolfe

This material may not be distributed without permission of the author.

The purpose of this document is to show you what you can expect should you choose to invest in this issue of the 0-hr Armada Codex. This issue presents three smaller ships: the Valhalla-class drop ship, Pilgrim-class general transport, and Fairlane 4000 luxury shuttle (plus the Fairlane-S security variant).

The product consists of a main book, map pages book, and uncut map images. Specifically, this is what is shown in this brief demo document:

- **Page 2: Main Book, Map Book, Map Images**

- An overview of the ships, components, and statistics is provided. The main book stats are generic descriptions and not from any particular game system - but Starfinder stat sheets are included separately. Each area of each vessel is enumerated and described. Rendered images are included throughout.
- The map book provides tactical maps (1 inch = 5 ft.) for the interior areas of the ships. The pages are designed to be printed out and laid edge to edge. Layers are used so that certain map elements (like the grid, cargo, or the black and white version of the map) may be toggled on and off as desired.
- Complete deckplans are presented in a single giant image, layered so that the grid, black and white version, and so on can be toggled on or off. It includes a light background good for printing, and a dark background good for display on a computer or with a projector. Single layer jpeg images are also included for easier VTT use.

- **Page 3:** This is a sample page from the map book. The layers are live in this demo document.

- **Page 4:** Displayed here is a sample of some rendered art from the main book.

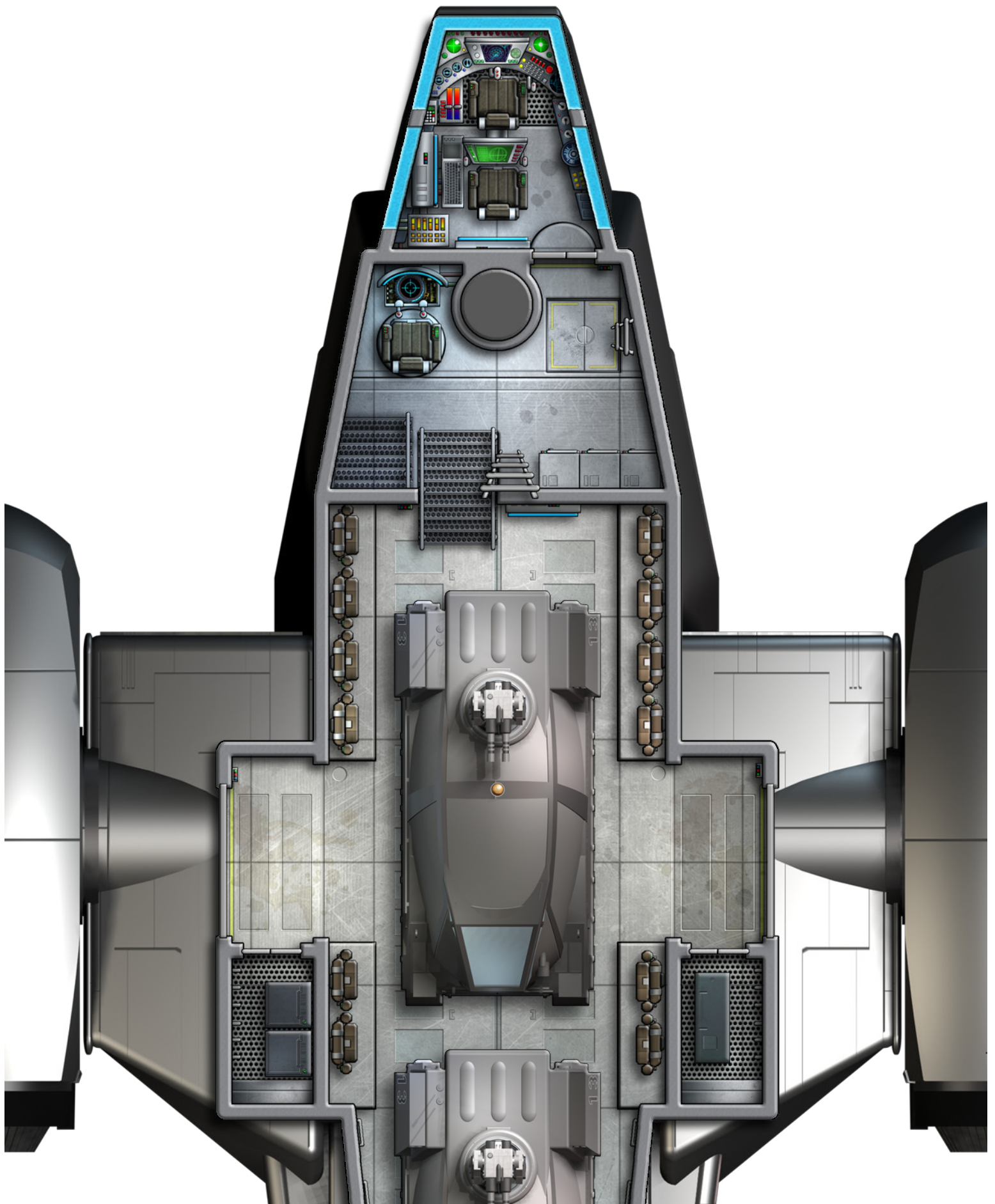
- **Page 5:** This is a copy of the product overview from the sales web page.

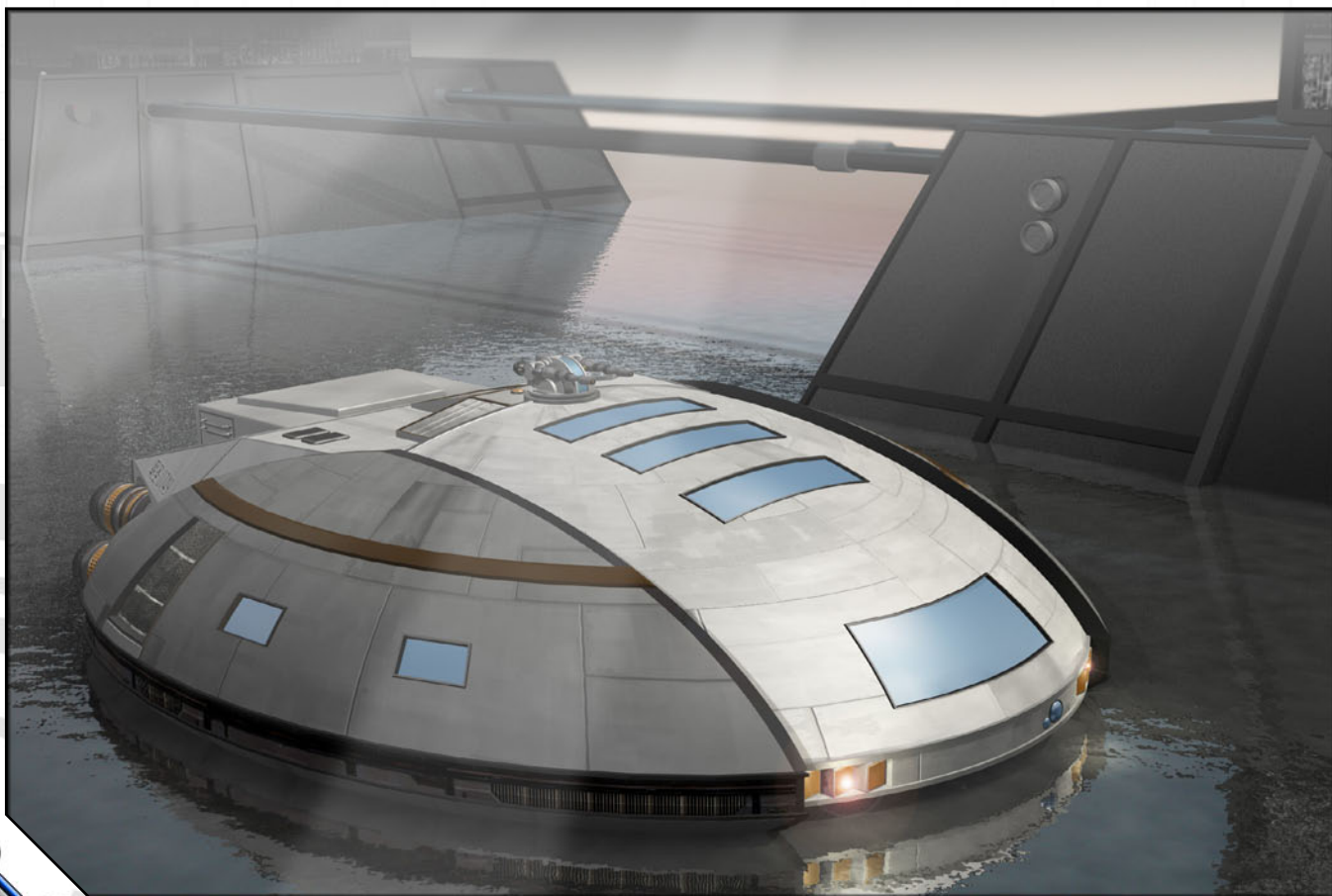
朝圣













## 0-hr Armada Codex

### Valhalla Trio

This issue of the Codex presents another trio of small ships to help bring your campaign to life. These ships are constructed for very different purposes but can be useful in many different scenarios in the hands of heroes, villains, and common people alike.

The **Valhalla**-class drop ship is also known as an “Iroquois Heavy” as it is a larger cousin of that VTOL craft, built for longer, less combat-intensive mission. In addition to a crew of 5, it carries 29 troops and a Seneca-class Armored Personnel Carriers, or 17 troops a pair of APCs.

The “Cháo Shèng” design is also known as the **Pilgrim**-class. It has four cabins and carries a wheeled all-terrain vehicle in the lower hold. This is a general – no frills – transport built to carry up to eight crew and passengers between distant star systems. It is also designed to allow for water landings and submerged operation.

Lastly, the **Fairlane 4000** is a deluxe shuttle for a wealthy couple, CEO, or crime lord, plus a chauffeur. It contains a well appointed lounge and luxurious cabin. There is also a well-armed “S” variant for use as a security, surveillance, or combat craft. It replaces the cabin furnishings with computer workstations and electronics gear and supports a crew of four.

The Valhalla Trio package contains several highly detailed PDF files and images:

- Main Book
  - 29 page PDF file detailing the interior areas of the ship and its capabilities.
  - Contains 3D rendered scenes as well as orthographic views.
  - Background, art, and text are on different layers for custom display and printing.
- Map Pages
  - 24 page PDF file containing complete interior maps at 1 inch = 5 foot scale.
  - Divided into pages for easy printing in full color or printer-friendly black and white.
  - Selectable layers include: 1-inch grid, black & white version, and optional cargo/vehicles.
- Uncut Map Images
  - Layered, single-page PDF file containing images of the deckplans.
  - Includes a 15x17 inch Valhalla, 24x17 Pilgrim, and two 10x12 Fairlane maps.
  - Text-free 150 dpi jpeg images, grid-aligned, on a dark background provided for VTT use.
- Starfinder Statistics
  - Custom Starfinder stat sheets are provided:
  - Valhalla: a tier 2 patrol boat (custom frame)
  - Pilgrim: a tier 2 “light freighter”
  - Fairlane: tier 4 and tier 5 shuttles

Sample document and art, as well as poster maps and ship miniatures, are available at **0-hr.com**.

Thank you for taking the time to consider the Valhalla, Pilgrim and Fairlane class starships. Like my previous small-craft offerings, I hope that these three little ships can be a big addition to your game!

