

FUTURE ARMADA

DELUXE STARSHIP DESIGNS



WAYFARER
SCOUT SHIP

3

Uses the Open Game License to present familiar stats for ship & crew.

OGL
SCI-FI

Demo Document for Future Armada: Wayfarer

by Ryan Wolfe of "zero hour" art & technology

0-hr.com

Future Armada: Wayfarer is copyright © 2010, Ryan Wolfe.

Overview

The purpose of this document is to show you what you can expect should you choose to invest in *Future Armada: Wayfarer*. The images on the following pages are low-resolution "print-preview" screen captures meant to provide a general idea of what is inside each book.

Specifically, this is what you're looking at:

- **Page 3:** Main Books for Wayfarer, the tug, and TOAD. These provide an overview of the ships and use the *OGL (Open Game License)* to present familiar statistics for the ships and pilots.
- **Page 4 (left):** Color Maps. The map book provides tactical maps (1 inch = 5 ft.) for the interior areas of both ships.
- **Page 4 (right):** Printer Friendly Maps. A black-and-white version of the color map book is provided.
- **Page 5:** Sample Map Page. This is a single page from the color map book, ready to be printed out and used with miniatures. The maps are designed to be laid end-to-end as needed.
- **Page 6:** Bonus Art. Two of the rendered 3D views are shown. The actual pictures are 800x600 jpeg images. This product also includes a poster-size jpeg of the entire ship at 1 inch = 5ft scale.
- **Page 7:** Add copy from the web page.

Thank you for taking the time to explore this product. I hope that these ships can be of service to you and your campaign!

ARMADA

DELIVER STAND-UP DESIGNS




TUG-402B

FREIGHT HAULER

DESCRIPTION OF THE MODEL
 This model is a freight hauler designed to transport cargo across the battlefield. It features a large, flatbed trailer and a heavy-duty chassis. The model is built to be durable and reliable, capable of handling a wide range of terrain and weather conditions. It is a key component of the Armada's logistics and supply chain, ensuring that troops and equipment are always where they need to be.

Part	Quantity	Notes
1	1	
2	1	
3	1	
4	1	
5	1	
6	1	
7	1	
8	1	
9	1	
10	1	
11	1	
12	1	
13	1	
14	1	
15	1	
16	1	
17	1	
18	1	
19	1	
20	1	
21	1	
22	1	
23	1	
24	1	
25	1	
26	1	
27	1	
28	1	
29	1	
30	1	
31	1	
32	1	
33	1	
34	1	
35	1	
36	1	
37	1	
38	1	
39	1	
40	1	
41	1	
42	1	
43	1	
44	1	
45	1	
46	1	
47	1	
48	1	
49	1	
50	1	



DESCRIPTION OF THE MODEL
 This model is a freight hauler designed to transport cargo across the battlefield. It features a large, flatbed trailer and a heavy-duty chassis. The model is built to be durable and reliable, capable of handling a wide range of terrain and weather conditions. It is a key component of the Armada's logistics and supply chain, ensuring that troops and equipment are always where they need to be.

ARMADA

DELIVER STAND-UP DESIGNS



WAYFARER

SCOUT SHIP

DESCRIPTION OF THE MODEL
 This model is a scout ship designed for reconnaissance and intelligence gathering. It is a fast and agile vessel, capable of operating in a variety of environments. The model is built to be durable and reliable, capable of handling a wide range of terrain and weather conditions. It is a key component of the Armada's intelligence and reconnaissance capabilities, ensuring that the commander always has the most up-to-date information on the battlefield.

Part	Quantity	Notes
1	1	
2	1	
3	1	
4	1	
5	1	
6	1	
7	1	
8	1	
9	1	
10	1	
11	1	
12	1	
13	1	
14	1	
15	1	
16	1	
17	1	
18	1	
19	1	
20	1	
21	1	
22	1	
23	1	
24	1	
25	1	
26	1	
27	1	
28	1	
29	1	
30	1	
31	1	
32	1	
33	1	
34	1	
35	1	
36	1	
37	1	
38	1	
39	1	
40	1	
41	1	
42	1	
43	1	
44	1	
45	1	
46	1	
47	1	
48	1	
49	1	
50	1	




DESCRIPTION OF THE MODEL
 This model is a scout ship designed for reconnaissance and intelligence gathering. It is a fast and agile vessel, capable of operating in a variety of environments. The model is built to be durable and reliable, capable of handling a wide range of terrain and weather conditions. It is a key component of the Armada's intelligence and reconnaissance capabilities, ensuring that the commander always has the most up-to-date information on the battlefield.

DESCRIPTION OF THE MODEL
 This model is a scout ship designed for reconnaissance and intelligence gathering. It is a fast and agile vessel, capable of operating in a variety of environments. The model is built to be durable and reliable, capable of handling a wide range of terrain and weather conditions. It is a key component of the Armada's intelligence and reconnaissance capabilities, ensuring that the commander always has the most up-to-date information on the battlefield.



Part	Quantity	Notes
1	1	
2	1	
3	1	
4	1	
5	1	
6	1	
7	1	
8	1	
9	1	
10	1	
11	1	
12	1	
13	1	
14	1	
15	1	
16	1	
17	1	
18	1	
19	1	
20	1	
21	1	
22	1	
23	1	
24	1	
25	1	
26	1	
27	1	
28	1	
29	1	
30	1	
31	1	
32	1	
33	1	
34	1	
35	1	
36	1	
37	1	
38	1	
39	1	
40	1	
41	1	
42	1	
43	1	
44	1	
45	1	
46	1	
47	1	
48	1	
49	1	
50	1	



DESCRIPTION OF THE MODEL
 This model is a scout ship designed for reconnaissance and intelligence gathering. It is a fast and agile vessel, capable of operating in a variety of environments. The model is built to be durable and reliable, capable of handling a wide range of terrain and weather conditions. It is a key component of the Armada's intelligence and reconnaissance capabilities, ensuring that the commander always has the most up-to-date information on the battlefield.



Part	Quantity	Notes
1	1	
2	1	
3	1	
4	1	
5	1	
6	1	
7	1	
8	1	
9	1	
10	1	
11	1	
12	1	
13	1	
14	1	
15	1	
16	1	
17	1	
18	1	
19	1	
20	1	
21	1	
22	1	
23	1	
24	1	
25	1	
26	1	
27	1	
28	1	
29	1	
30	1	
31	1	
32	1	
33	1	
34	1	
35	1	
36	1	
37	1	
38	1	
39	1	
40	1	
41	1	
42	1	
43	1	
44	1	
45	1	
46	1	
47	1	
48	1	
49	1	
50	1	





Part	Quantity	Notes
1	1	
2	1	
3	1	
4	1	
5	1	
6	1	
7	1	
8	1	
9	1	
10	1	
11	1	
12	1	
13	1	
14	1	
15	1	
16	1	
17	1	
18	1	
19	1	
20	1	
21	1	
22	1	
23	1	
24	1	
25	1	
26	1	
27	1	
28	1	
29	1	
30	1	
31	1	
32	1	
33	1	
34	1	
35	1	
36	1	
37	1	
38	1	
39	1	
40	1	
41	1	
42	1	
43	1	
44	1	
45	1	
46	1	
47	1	
48	1	
49	1	
50	1	




ARMADA

DELIVER STAND-UP DESIGNS



TOAD

BATTLEFIELD TRANSPORT

DESCRIPTION OF THE MODEL
 This model is a battlefield transport designed to carry troops and equipment across the battlefield. It is a rugged and reliable vehicle, capable of operating in a variety of environments. The model is built to be durable and reliable, capable of handling a wide range of terrain and weather conditions. It is a key component of the Armada's logistics and supply chain, ensuring that troops and equipment are always where they need to be.

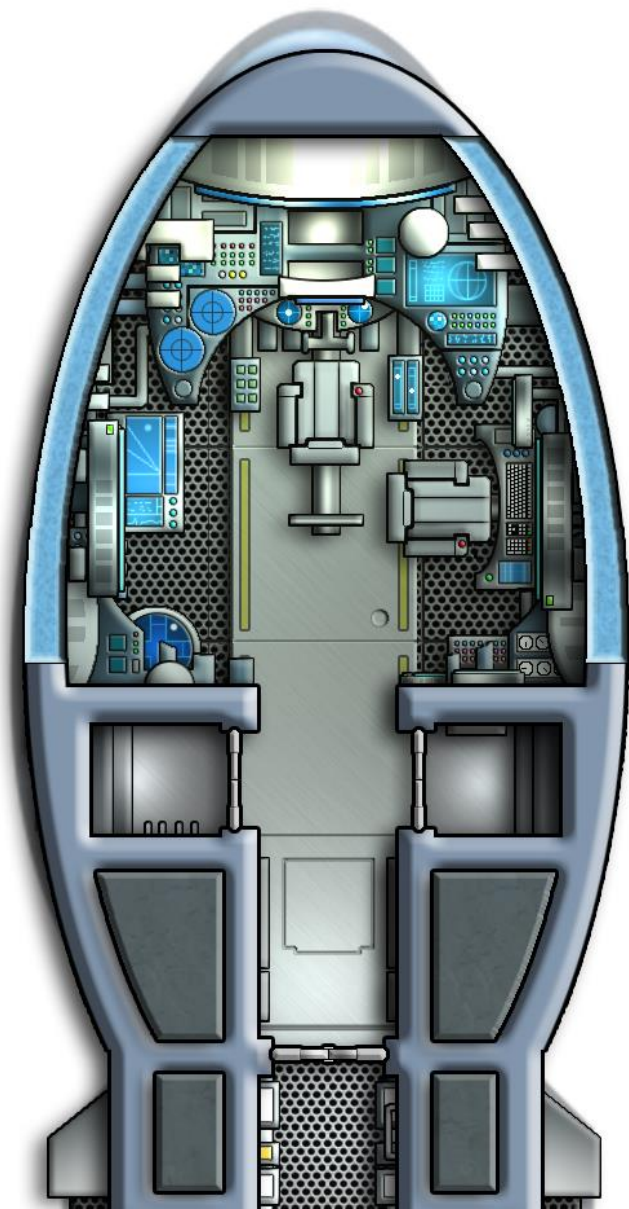
Part	Quantity	Notes
1	1	
2	1	
3	1	
4	1	
5	1	
6	1	
7	1	
8	1	
9	1	
10	1	
11	1	
12	1	
13	1	
14	1	
15	1	
16	1	
17	1	
18	1	
19	1	
20	1	
21	1	
22	1	
23	1	
24	1	
25	1	
26	1	
27	1	
28	1	
29	1	
30	1	
31	1	
32	1	
33	1	
34	1	
35	1	
36	1	
37	1	
38	1	
39	1	
40	1	
41	1	
42	1	
43	1	
44	1	
45	1	
46	1	
47	1	
48	1	
49	1	
50	1	

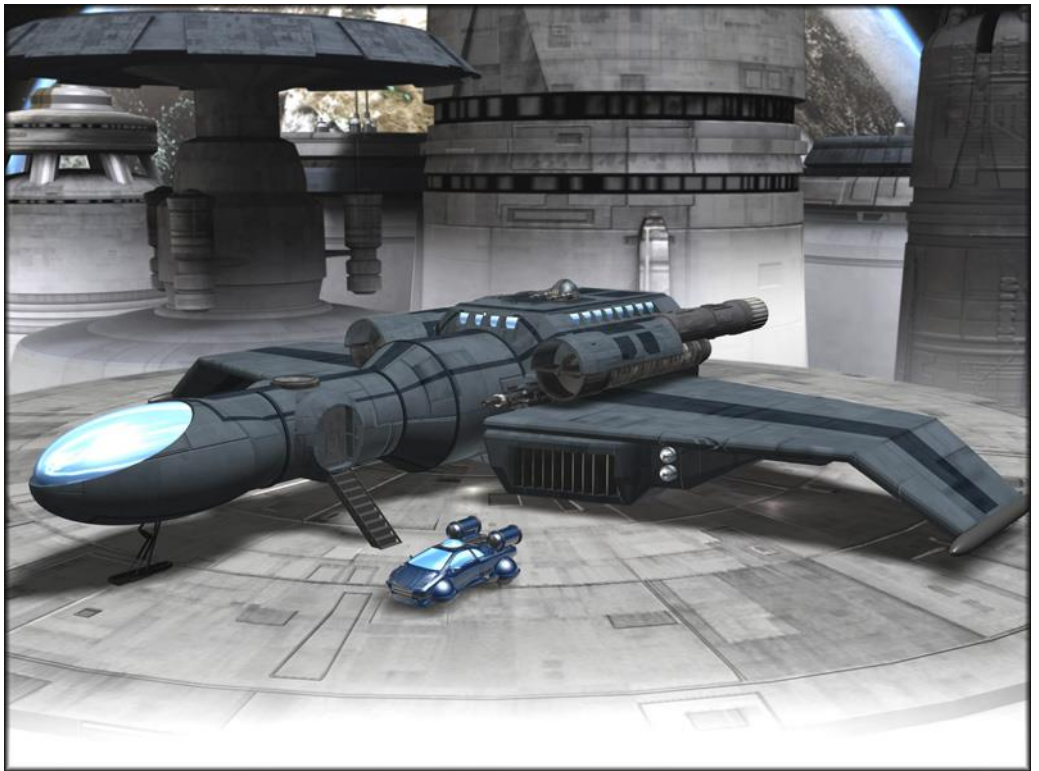


DESCRIPTION OF THE MODEL
 This model is a battlefield transport designed to carry troops and equipment across the battlefield. It is a rugged and reliable vehicle, capable of operating in a variety of environments. The model is built to be durable and reliable, capable of handling a wide range of terrain and weather conditions. It is a key component of the Armada's logistics and supply chain, ensuring that troops and equipment are always where they need to be.









FUTURE ARMADA

Deluxe Starship Designs

WAYFARER

Scout Ship

Wayfarer is a state of the art Seeker-class scout ship - a reconnaissance and surveillance vessel built for long range operations. It is designed to be operated by either a single pilot or pilot/co-pilot team, though a 4-6 person variant is provided. This small vessel is approximately 120ft long, with a wingspan about 20ft longer, and employs some of the latest progress-level seven technology. The cargo bay also contains a custom hover car for more stealthy reconnaissance or just off-duty cruising.

To round things out, two additional small craft are included. The first is the "TOAD" Transport for Omniphibious Advanced Deployment. This military transport was developed to quickly deploy and recover a platoon of troops or recon team and vehicle on the battlefield. These sturdy craft employ massive, rotating engines for high-G vertical take off and landing. The armored Toad hull is designed to land on anything from solid ground, to swamp, to calm water; and can maneuver in space or atmosphere with equal agility.

TUG-4103 is an old freight hauler was made to pull long trains of unmanned cargo pods (also included). It requires only a single crew and operates exclusively in space - sporting a powerful set of ion engines but no atmospheric thrusters. Though not glamorous or adventurous, it is a common sight in the space lanes and should be useful as either a supporting character or a main player just starting out. Complete stats, maps, and bonus art are provided for all of the vessels.

The .zip file contains the everything you need for these ships:

- Wayfarer Overview
 - 14 page PDF file detailing the ship, interior locations, and captain.
 - Open Game License stats provided for the vessel, crew, and hover car carried in the cargo bay.
 - Includes the Shadowhawk variant which sleep six and sports a darker paint scheme plus turreted guns.
- Tug-4103 & TOAD Overviews
 - 7 page PDF file that covers the same aspects listed above, but for the freight hauler TUG-4103.
 - A similar 7 page PDF file for TOAD.
- Map Book
 - Full-color 15 page PDF file containing complete interior maps for all ships.
 - Includes miniature-scale maps for tactical combat.
 - Broken into pages for easy printing.
- Printer friendly, black and white version of the map book.
- Composite maps of the ship interiors.
 - A 8.5x22 inch, 150 dpi, color JPEG image of the Wayfarer.
 - A 14x11 inch, 150 dpi, color JPEG image of Tug-4103.
 - A 16x11 inch, 150 dpi, color JPEG image of TOAD.
- Fifteen rendered external shots are also included.

Demo documents, and art are available free at 0-hr.com