

FUTURE ARMADA

DELUXE STARSHIP DESIGNS



MISFORTUNE CONTAINER SHIP

i3

Uses the Open Game License to present familiar stats for ship & crew.

OGL
SCI-FI

Demo Document for Future Armada: MisFortune

by Ryan Wolfe of "zero hour" art & technology

0-hr.com

Future Armada: MisFortune is copyright © 2008, Ryan Wolfe

Overview

The purpose of this document is to show you what you can expect should you choose to invest in *Future Armada: MisFortune*, which contains the MisFortune container ship and the Alpha variant bulk hauler, as well as the Ajax-class military transport and single-pilot Sherpa-class freight hauler. The images on the following pages are low-resolution thumbnails meant to provide a general idea of what is inside each book.

Specifically, this is what you're looking at:

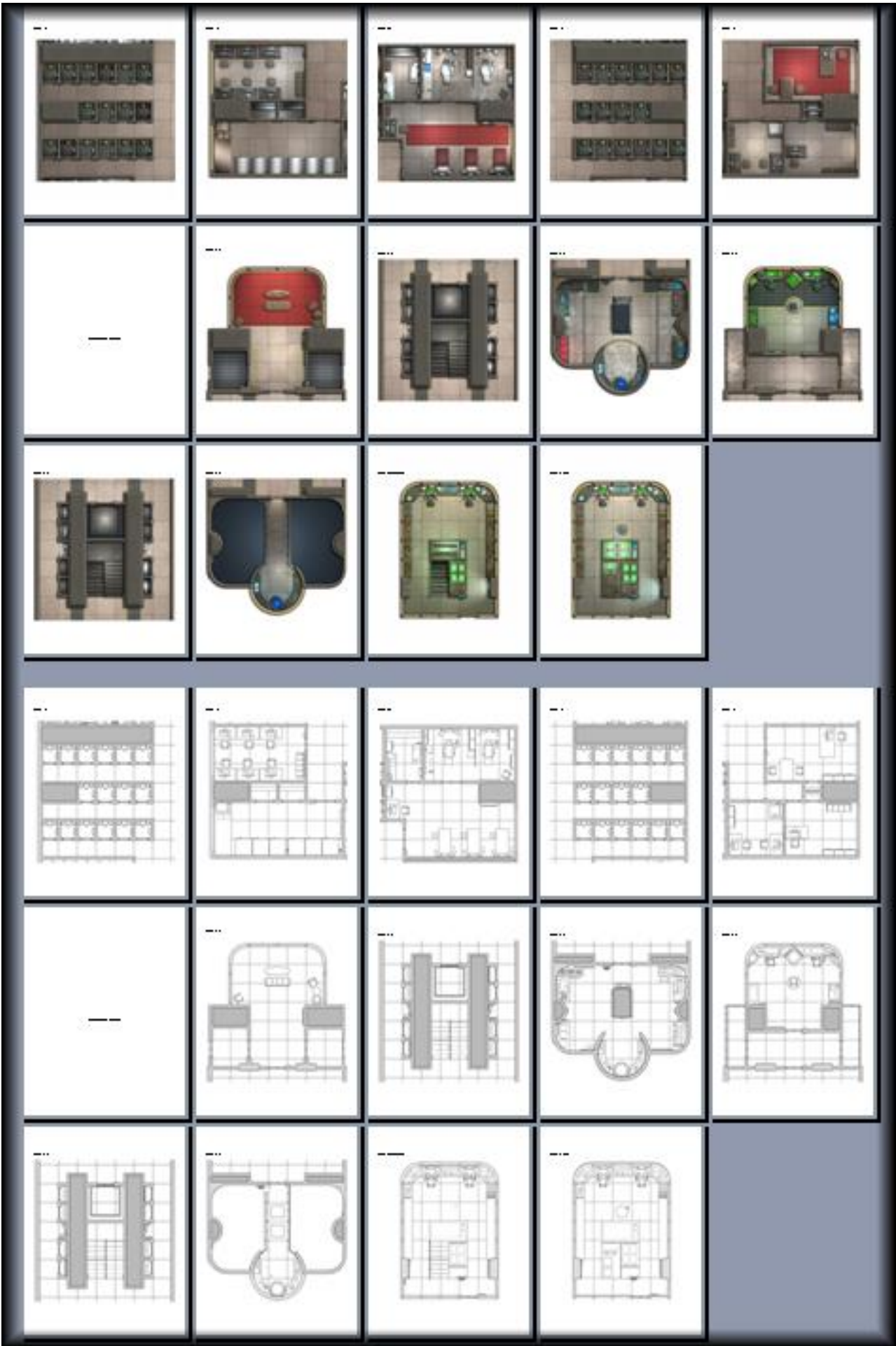
- **Page 3:** "MisFortune" Main Book. Brief descriptions are given for each area of the vessel, and composite maps are provided so it is easy to put the pieces together. The Open Game License is utilized to present stat blocks familiar to players of the futuristic version of the world's most popular role playing game. Note that these are the same mechanics as have always been found in *Future Armada*. Only the license, logo, and legal details have changed.
- **Page 4 (top):** Color Maps. The map book provides tactical maps (1 inch = 5 ft.) for the interior areas of the ship. The screen shot shows a sampling of the pages. The Ajax-class uses a subset of the MisFortune map pages. The Sherpa and several container variants are mapped out in their own document.
- **Page 4 (bottom):** Printer Friendly Maps. Grayscale versions of the color map books are provided.
- **Page 5:** Sherpa books. For convenience, the small but versatile Sherpa-class freight hauler is described in its own set of

documents. This page shows the interior of the Sherpa book, plus sample pages from its color map book and black and white map book.

- **Page 6:** Sample Map. This is a single page from the MisFortune color map book, ready to be printed out and used with miniatures. The maps are designed to be laid end-to-end as needed.
- **Page 7:** Additional Art. Two of several rendered images. The first is a Sherpa and the second is the Alpha variant mentioned earlier (the Ajax-class military transport is the green ship on the cover). The actual pictures are 800x600 jpeg images. This product also includes a giant jpeg image of the Ajax-class transport at 1 inch = 5ft scale. The MisFortune herself is too large to present in this manner.
- **Page 8:** Add copy from the sales web page.

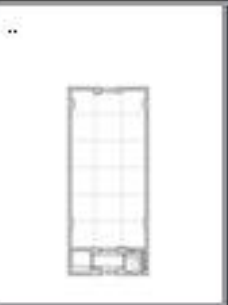
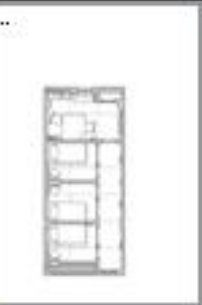
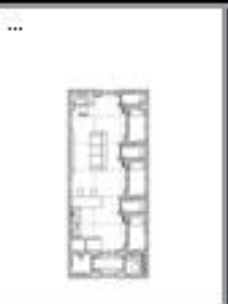
Thank you for taking the time to explore this product. I hope that you'll let sets of cargo ships carry your game to new horizons!

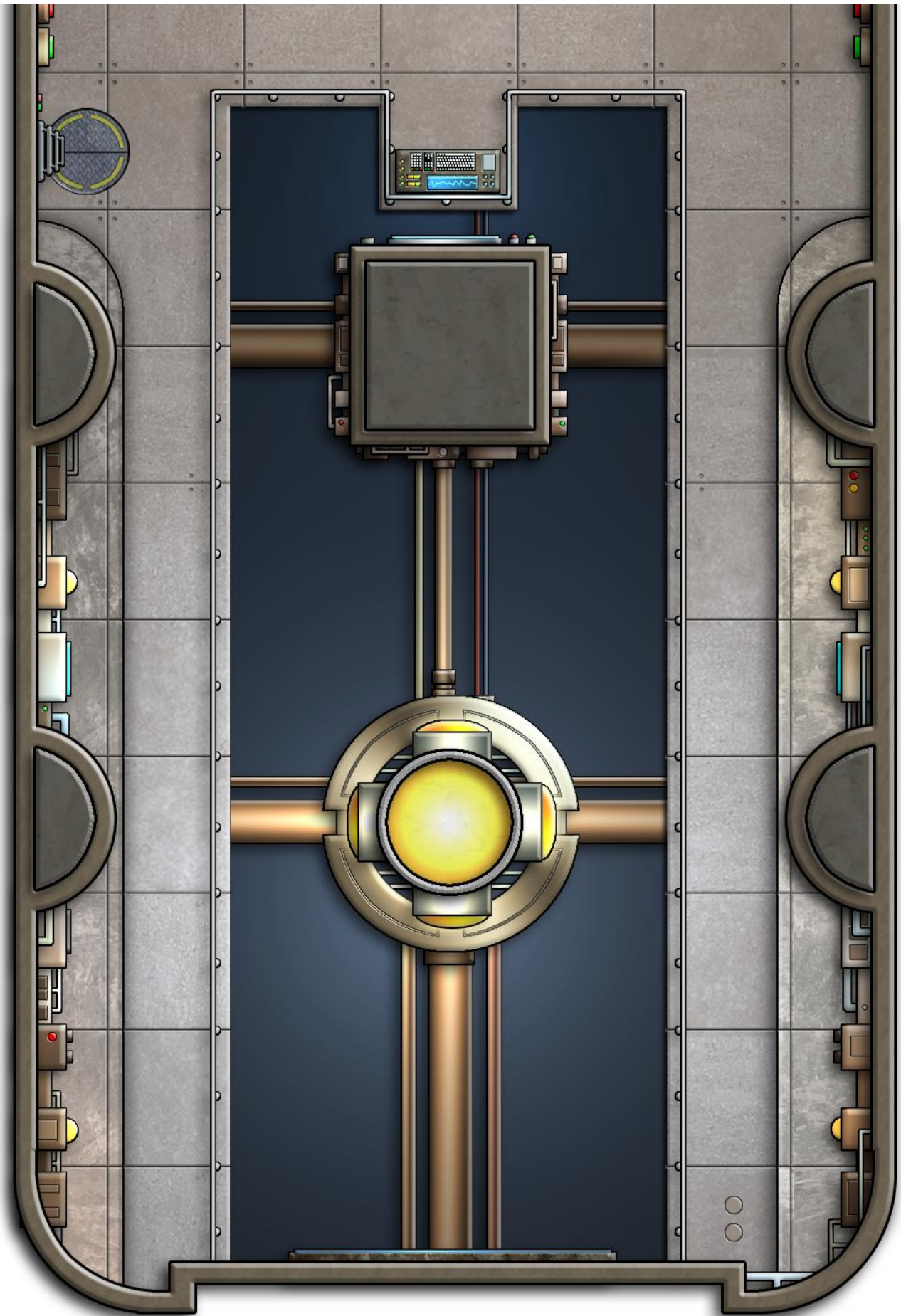






SHERPA	
Model	1000
Year	2000
Engine	4.0L
Transmission	5-Speed
Drivetrain	4WD
Weight	3500 lbs
Length	18 ft
Width	7 ft
Height	6 ft
Top Speed	100 mph
0-60 Time	10 sec
Range	500 miles
Fuel Capacity	100 gallons
Max Load	10,000 lbs
Max Towing	20,000 lbs
Max Hauling	30,000 lbs
Max Climbing	20%
Max Turning	90 degrees
Max Stopping	100 ft
Max Acceleration	0-100 mph
Max Deceleration	0-100 mph
Max Braking	100 ft
Max Steering	90 degrees
Max Suspension	100 ft
Max Shocking	100 ft
Max Vibration	100 ft
Max Noise	100 ft
Max Pollution	100 ft
Max Emissions	100 ft
Max Exhaust	100 ft
Max Fuel	100 ft
Max Oil	100 ft
Max Water	100 ft
Max Air	100 ft
Max Light	100 ft
Max Sound	100 ft
Max Heat	100 ft
Max Cold	100 ft
Max Dry	100 ft
Max Wet	100 ft
Max Snow	100 ft
Max Ice	100 ft
Max Fog	100 ft
Max Rain	100 ft
Max Wind	100 ft
Max Sun	100 ft
Max Moon	100 ft
Max Stars	100 ft
Max Planets	100 ft
Max Galaxies	100 ft
Max Universe	100 ft





Additional Art



MISFORTUNE

Container Ship

Originally christened "Fortune", this massive container ship has suffered a long run of bad luck. Though old and neglected, the ship continues on as if driven by its own purpose. At over 1000 ft long, this heavy can carry 624 of the common HMT-337 cargo containers and is designed to provide power, life support, and access to each one during flight. As these standard containers can be customized for everything from freight, to passengers, to offices and medical facilities, this ship is the ultimate in large-scale, affordable versatility.

This oversized issue also includes a bulk-hauler variant (with a dozen 5,000 ton cargo bays instead of container couplings) and the smaller Ajax-class military transport. This workhorse uses the same technology (and a subset of map pages) as MisFortune to provide a rugged transport with a flexible payload capability. With space for 48 containers, it has plenty of room for troops, cargo, and modular base sections.

Finally, this issue introduces the Sherpa-class freight hauler. This single-pilot ship is little more than a frame with engines and cockpit attached. Designed to carry a single cargo container and easily switch from one to another, this rugged working-man's ship is a common sight at ports throughout civilized space. MisFortune carries a pair of these vessels and the Ajax-class transport has an external landing pad for one. Ten container designs, including a "blank", are provided along with the Sherpa.

The .zip file contains the following:

- Overview
 - 29 page PDF file detailing the ships, interior areas, and crew.
 - The main book also includes the Alpha (bulk hauler) variant and the Ajax-class transport.
 - Open Game License stats provided for the vessel and crew.
- Map Books
 - Full-color 64 page PDF file containing complete interior maps.
 - Includes miniature-scale maps for tactical combat.
 - Broken into pages for easy printing.
- Printer friendly, black and white version of the map book.
- Miniature-scale composite map of the Ajax interior.
 - A poster-sized, 32x64 inch, 150 dpi, color JPEG image of the Ajax deck plan.
 - NOTE: MisFortune is too large for a single miniature-scale image.
- For convenience, the versatile Sherpa-class freight hauler is detailed in its own documents:
 - 10 page PDF detailing the Sherpa, several custom container types, and sample pilot.
 - Full-color 15 page PDF file with miniature-scale maps.
 - Printer friendly, black and white version of the map book.
 - The Sherpa already fits on a single page and so does not require a separate poster.
- Art directory with rendered images of all the ships.

Sample documents and images are available at **0-hr.com**

Like all of the Future Armada ships, these are meant to be useful to game masters and players alike. A scenario idea is included for MisFortune - taking its unique history into account - but story, stats, and maps are all easily separated. Let this collection of versatile cargo ships carry your game to new places!