

SHIP NAME

MAKE / MODEL / CLASS

SIZE & FRAME

SPEED MANEUVERABILITY

RATING HYPERSPACE ENGINE

PCU POWER CORE

SHIELDS

SENSORS

PORT WEAPONS

CREW

CAPTAIN

ENGINEERS

GUNNERS

PILOT

SCIENCE OFFICERS

NOTES



COMPLEMENT

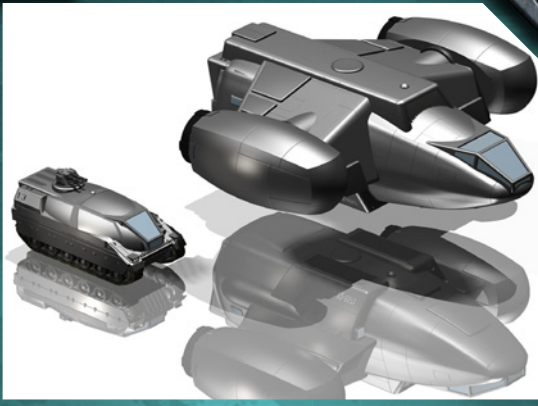


MODIFIERS

TIER

TURRETS

FORWARD WEAPONS



AC = 10+ PILOT + ARMOR + SIZE + MISC

TL = 10+ PILOT + COUNTER + SIZE + MISC

HULL TOTAL CURRENT

THRESHOLDS DT CT

STARBOARD WEAPONS

SYSTEMS

EXPANSION BAYS

CARGO & PASSENGERS



AFT WEAPONS

01 - 10 CRITICAL DAMAGE

LIFE SUPPORT

11 - 30

SENSORS

31 - 60 WEAPONS

61 - 80

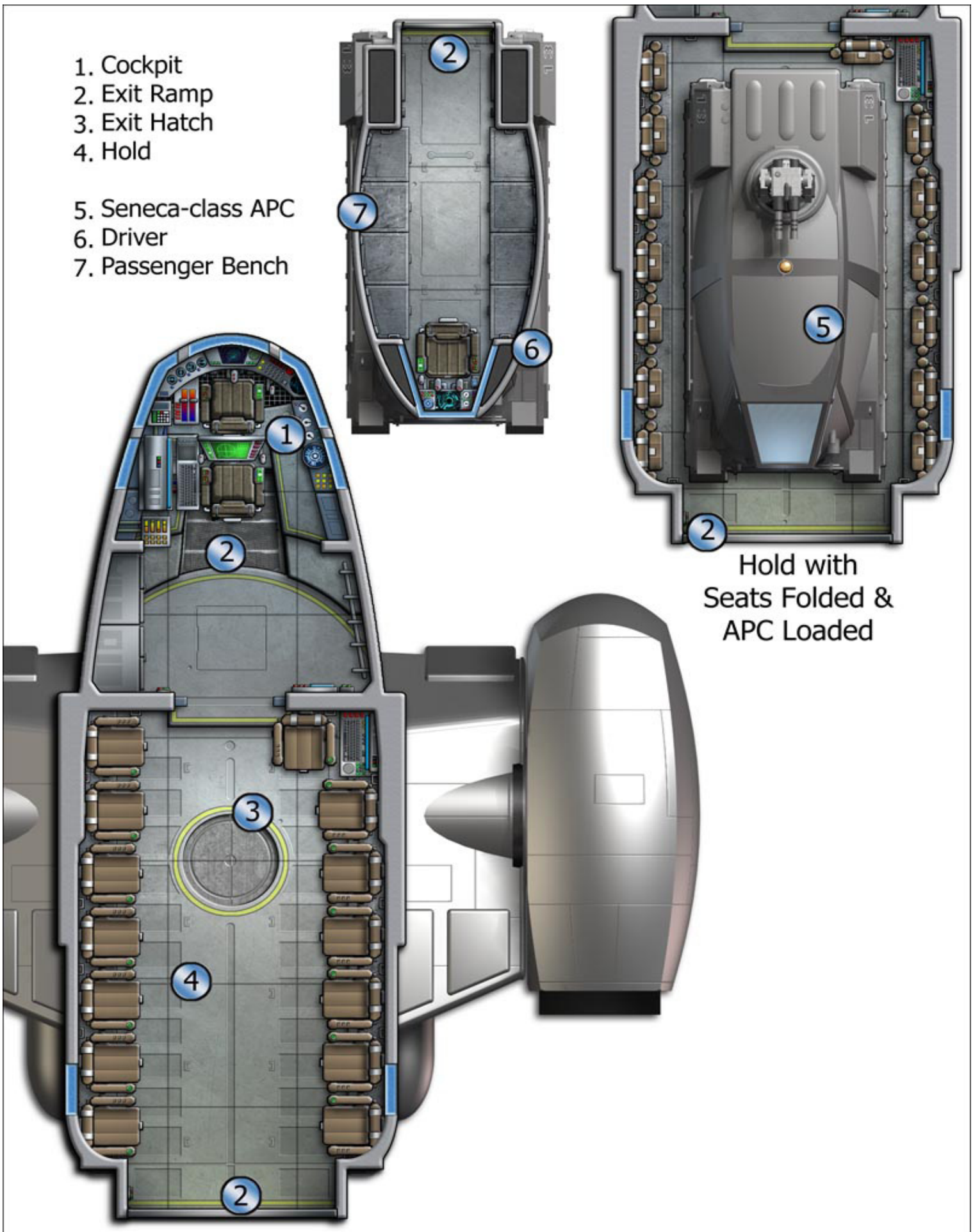
ENGINES

81 - 00

POWER CORE

- 1. Cockpit
- 2. Exit Ramp
- 3. Exit Hatch
- 4. Hold

- 5. Seneca-class APC
- 6. Driver
- 7. Passenger Bench



Hold with
Seats Folded &
APC Loaded