



# ARMADA CODEX™



KÄERU & CO.  
SCOUT - CARRIER

# 0-hr: Kaeru & Company - demo document

by Ryan Wolfe of "zero hour" art & technology

0-hr.com

Copyright © 2023 by Ryan Wolfe

This material may not be distributed without permission of the author.

The purpose of this document is to show you what you can expect should you choose to invest in this issue of the 0-hr Armada Codex. This issue presents three smaller ships: the Valhalla-class drop ship, Pilgrim-class general transport, and Fairlane 4000 luxury shuttle (plus the Fairlane-S security variant).

The product consists of a main book, map pages book, and uncut map images. Specifically, this is what is shown in this brief demo document:

- **Page 2: Main Book, Map Book, Map Images**

- An overview of the ships, components, and statistics is provided. The main book stats are generic descriptions and not from any particular game system - but Starfinder stat sheets are included separately. Each area of each vessel is enumerated and described. Rendered images are included throughout.
- The map book provides tactical maps (1 inch = 5 ft.) for the interior areas of the ships. The pages are designed to be printed out and laid edge to edge. Layers are used so that certain map elements (like the grid, cargo, or the black and white version of the map) may be toggled on and off as desired.
- Complete deckplans for each ship are presented in a single large image, layered so that the grid, black and white version, and so on can be toggled on or off. It includes a light background good for printing, and a dark background good for display on a computer or with a projector. Single layer jpeg images are also included for easier VTT use.

- **Page 3:** This is a sample page from the map book. The layers are live in this demo document.

- **Page 4:** Displayed here is a sample of some rendered art from the main book.

- **Page 5:** This is a copy of the product overview from the sales web page.

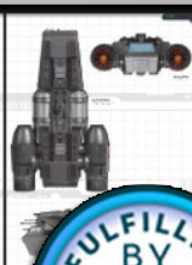




Kaseru & Co.

Model:	
Scale:	
Year:	
Manufacturer:	
Length:	
Width:	
Height:	
Weight:	
Speed:	
Armament:	
Defenses:	
Special Abilities:	
Notes:	

Scout-Carrier



KASERU

Model:	
Scale:	
Year:	
Manufacturer:	
Length:	
Width:	
Height:	
Weight:	
Speed:	
Armament:	
Defenses:	
Special Abilities:	
Notes:	

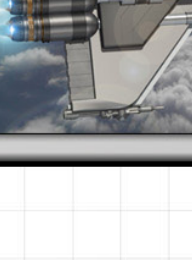
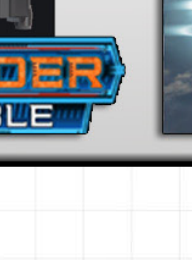
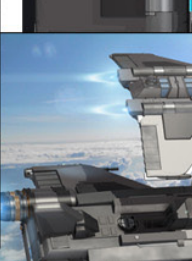
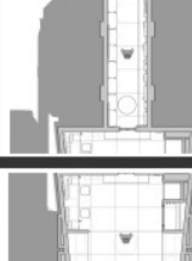
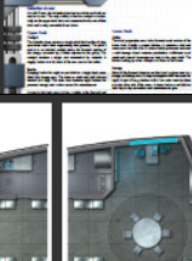
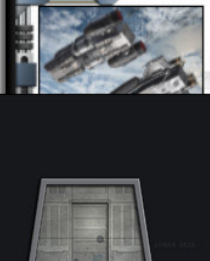
ARKADIN

Model:	
Scale:	
Year:	
Manufacturer:	
Length:	
Width:	
Height:	
Weight:	
Speed:	
Armament:	
Defenses:	
Special Abilities:	
Notes:	

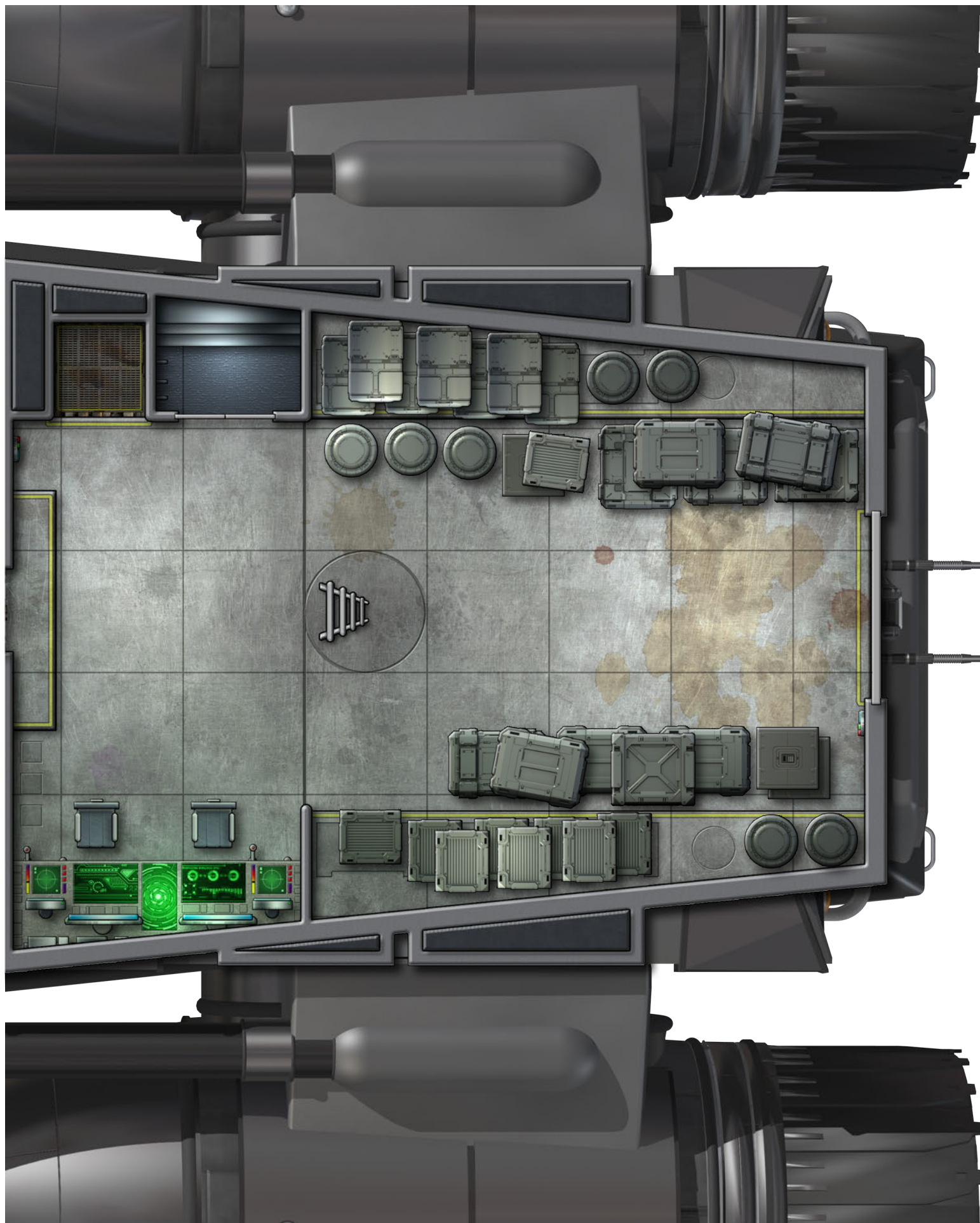


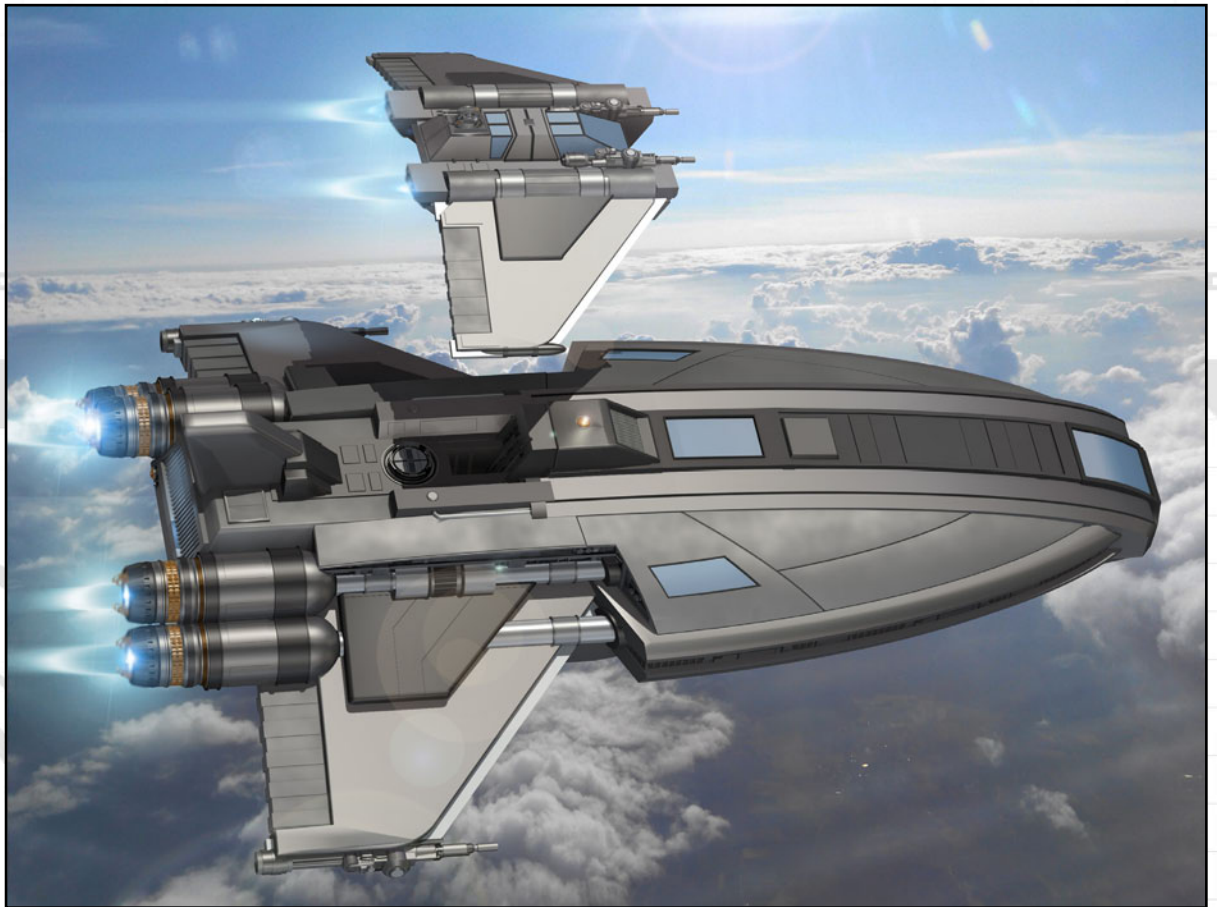
SASORI

Model:	
Scale:	
Year:	
Manufacturer:	
Length:	
Width:	
Height:	
Weight:	
Speed:	
Armament:	
Defenses:	
Special Abilities:	
Notes:	



STARFINDER  
COMPATIBLE





## 0-hr Armada Codex

### Kaeru & Co.

This issue of the Zero Hour Armada Codex presents two small ships and the fighter they carry. These craft are meant for characters of all sorts and a variety of stories.

The Kaeru-class scout carries a Sasori-class fighter on its back. The name is Japanese for “frog” while Sasori is “scorpion” - because this configuration is reminiscent of the classic fable (though, hopefully, with less dire consequences). The scout has cabins and facilities for a crew of six. She is armed with three retractable turrets and a pair of heavier wing-mounted guns.

The Arkadin-class ultralight carrier was designed as a support rack for a trio of Sasori - providing a base of operations, refueling platform, and FTL assist. There are 8 bunks on board; six for the fighter crews and two for the carrier itself. Arkadin hauls fuel and supplies for extended missions and, like Kaeru, is armed with a trio of turrets - though these are larger emplacements.

The Sasori-class heavy fighter is a two-person strike craft with a pair of particle cannons fixed forward and an aft-mounted retractable, turreted laser cannon. It is also equipped with a ventral hatch and couplings that let it dock with larger craft in space.

The Kaeru & Company package contains several highly detailed PDF files and images:

- Main Book
  - 23 page PDF file detailing the interior areas of the ships and their capabilities.
  - Contains 3D rendered scenes as well as orthographic views.
  - Background, art, and text are on different layers for custom display and printing.
- Map Pages
  - 19 page PDF file containing complete interior maps at 1 inch = 5 foot scale.
  - Divided into pages for easy printing in full color or printer-friendly black and white.
  - Selectable layers include: 1-inch grid, black & white version, and optional cargo/vehicles.
- Uncut Map Images
  - Layered, single-page PDF files containing images of the deckplans.
  - Includes 20x24 inch Kaeru and Arkadin maps and a 7x10 Sasori map.
  - Text-free 150 dpi jpeg images, grid-aligned, on a dark background provided for VTT use.
- Starfinder Statistics
  - Custom Starfinder stat sheets are provided:
  - Kaeru: a tier 7 patrol boat (custom frame)
  - Arkadin: a tier 6 light freighter
  - Sasori: a tier 5 fighter

Sample documents and art, as well as poster maps and ship miniatures, are available at [0-hr.com](http://0-hr.com)

Thank you for taking the time to consider these ships. I hope that they can help bring your story to life!

