

FUTURE ARMADA

DELUXE STARSHIP DESIGNS



MORNINGSTAR HEAVY CORVETTE



Uses the Open Game License to present familiar stats for ship & crew.

OGL
SCI-FI

Demo Document for Future Armada: Morningstar

by Ryan Wolfe of “zero hour” art & technology

0-hr.com

Future Armada: Morningstar is copyright © 2004, Ryan Wolfe. All text in this book other than proper names is designated as open game content.

Overview

The purpose of this document is to show you what you can expect should you purchase *Future Armada: Morningstar*. The images on the following pages are low-resolution “print-preview” screen captures meant to provide a general idea of what is inside each book.

Specifically, this is what you’re looking at:

- **Page 3:** Main Book. This provides an overview of the CSS Morningstar and statistics for the ship, its crew, and even the shuttle craft carried in its hangar. Brief descriptions are given for each area of the ship, and a composite map is provided so it is easy to put the pieces together. The Open Game License is utilized to present stat blocks familiar to players of the futuristic version of the world’s most popular role playing game. Note that these are the same mechanics as have always been found in *Future Armada*. Only the license, logo, and legal details changed in mid-2008.
- **Page 4:** Color Maps. The map book provides tactical maps (1 inch = 5 ft.) for the interior areas of the ship and the shuttles. The screen shot does not show all of the map booklet.
- **Page 5:** Printer Friendly Maps. A black-and-white version of the color map book is provided for those people who don’t have access to a color printer at work. Again, not all of the pages are shown.
- **Page 6:** Sample Map. This is a single page from the color map book, ready to be printed out and used with miniatures. The maps are designed to be laid end-to-end as needed.
- **Page 7:** Add Copy. The final page of this demonstration document is a copy of the product description from the sales web site.

Thank you for taking the time to explore this product. I hope that the *Morningstar* can be of service to you in your gaming endeavors!



THE MORNINGSTAR HEAVY CORVETTE IS A...
 IT IS A...
 THE MORNINGSTAR HEAVY CORVETTE IS A...
 IT IS A...
 THE MORNINGSTAR HEAVY CORVETTE IS A...
 IT IS A...

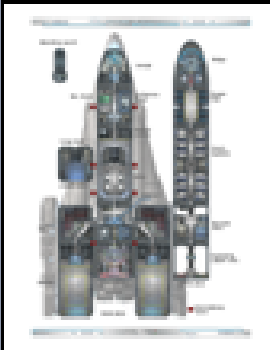
Category	Value
Length	100m
Width	50m
Height	30m
Mass	10,000t
Armament	2x Heavy Laser, 4x Medium Laser
Defenses	1x Point Defense, 1x Energy Shield
Speed	100kph
Maneuverability	High
Range	1000km
Cost	100,000 credits



THE MORNINGSTAR HEAVY CORVETTE IS A...
 IT IS A...
 THE MORNINGSTAR HEAVY CORVETTE IS A...
 IT IS A...
 THE MORNINGSTAR HEAVY CORVETTE IS A...
 IT IS A...

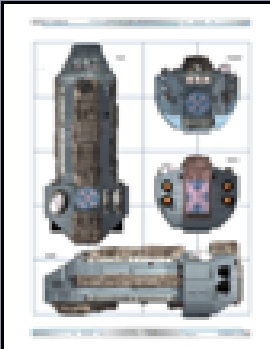
THE MORNINGSTAR HEAVY CORVETTE IS A...
 IT IS A...
 THE MORNINGSTAR HEAVY CORVETTE IS A...
 IT IS A...
 THE MORNINGSTAR HEAVY CORVETTE IS A...
 IT IS A...

THE MORNINGSTAR HEAVY CORVETTE IS A...
 IT IS A...
 THE MORNINGSTAR HEAVY CORVETTE IS A...
 IT IS A...
 THE MORNINGSTAR HEAVY CORVETTE IS A...
 IT IS A...

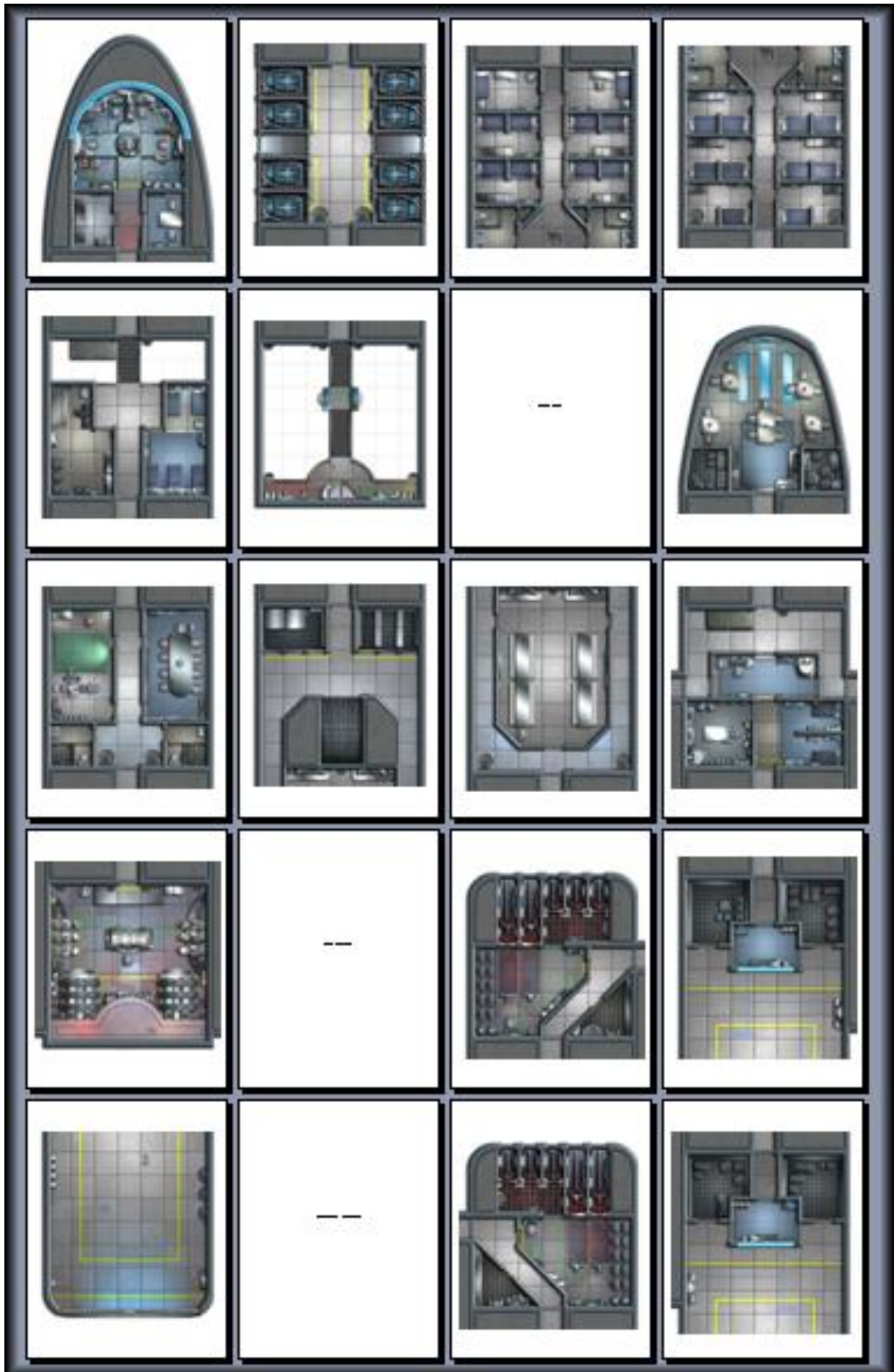


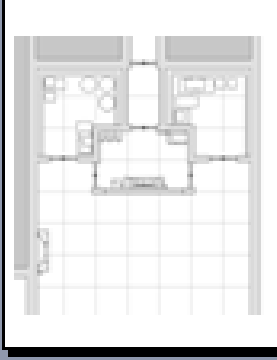
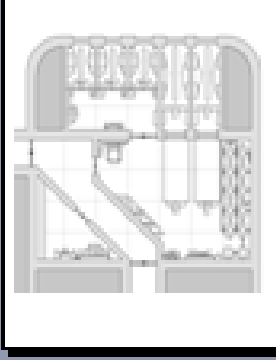
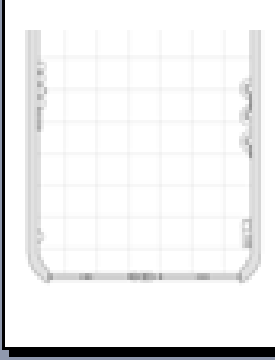
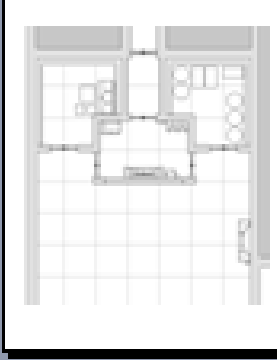
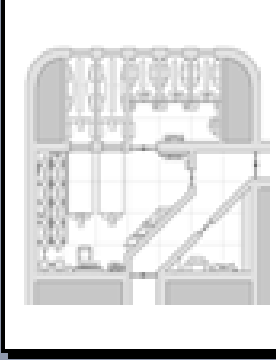
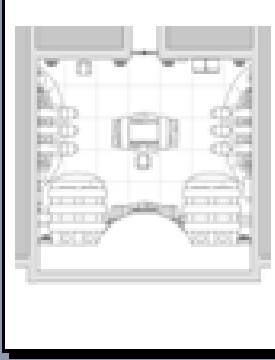
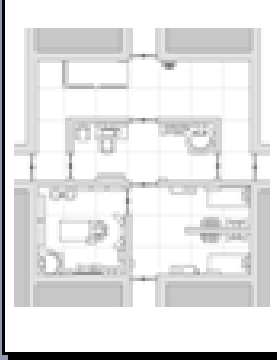
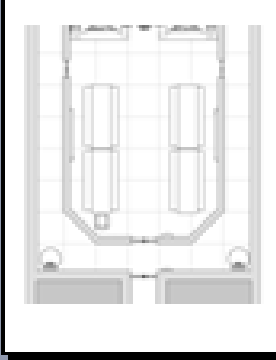
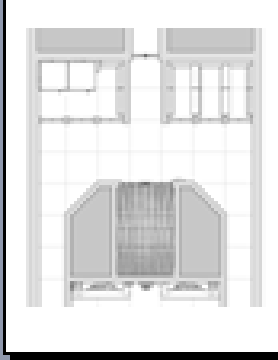
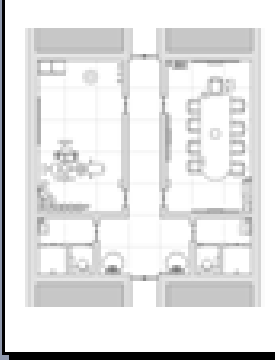
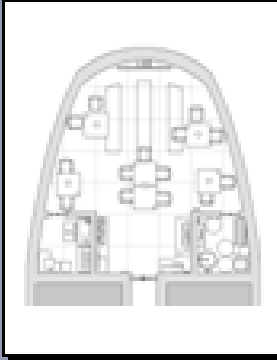
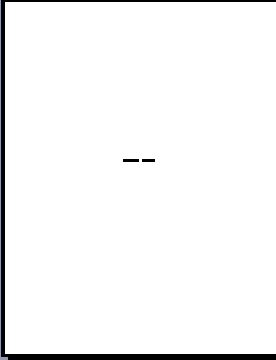
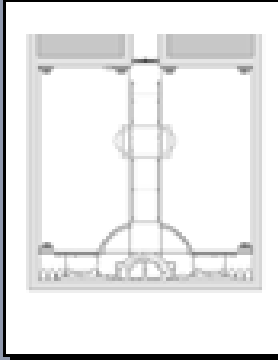
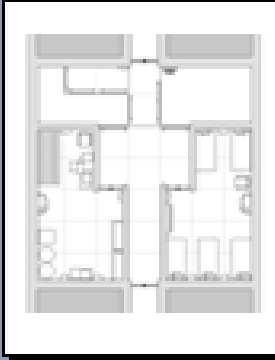
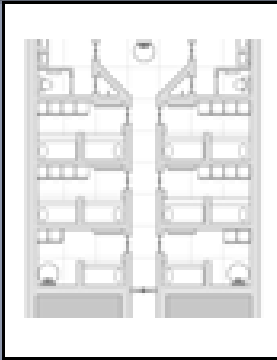
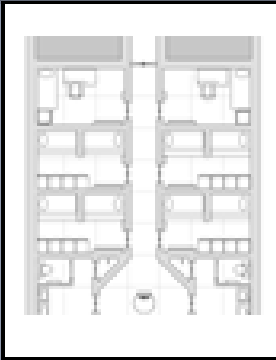
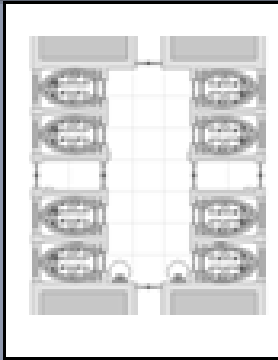
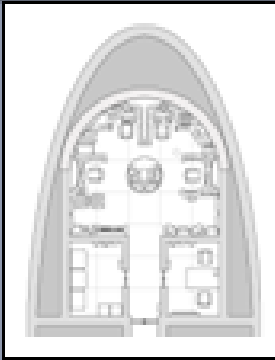
THE MORNINGSTAR HEAVY CORVETTE IS A...
 IT IS A...
 THE MORNINGSTAR HEAVY CORVETTE IS A...
 IT IS A...
 THE MORNINGSTAR HEAVY CORVETTE IS A...
 IT IS A...

THE MORNINGSTAR HEAVY CORVETTE IS A...
 IT IS A...
 THE MORNINGSTAR HEAVY CORVETTE IS A...
 IT IS A...
 THE MORNINGSTAR HEAVY CORVETTE IS A...
 IT IS A...

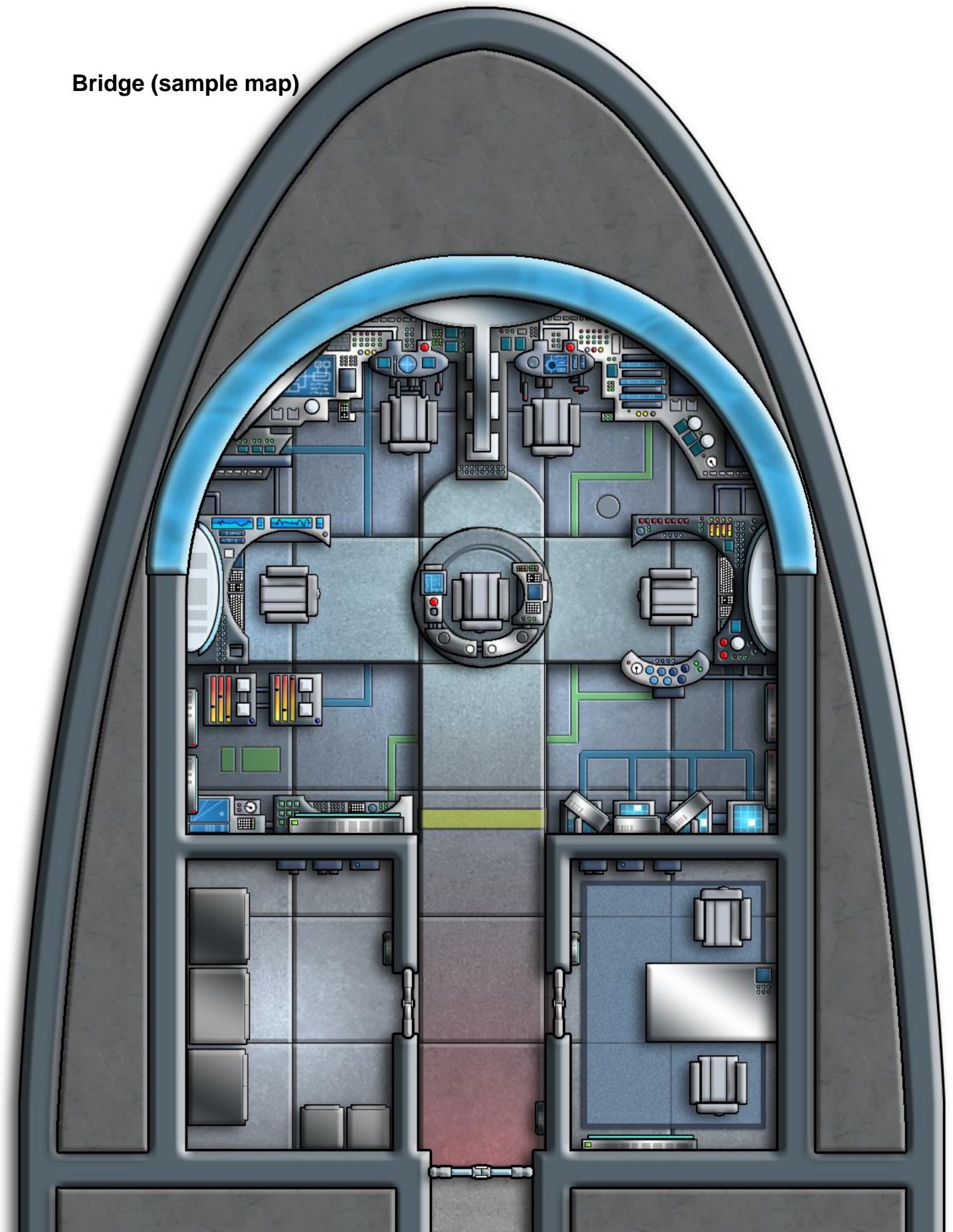


THE MORNINGSTAR HEAVY CORVETTE IS A...
 IT IS A...
 THE MORNINGSTAR HEAVY CORVETTE IS A...
 IT IS A...
 THE MORNINGSTAR HEAVY CORVETTE IS A...
 IT IS A...





Bridge (sample map)



MORNINGSTAR

Heavy Corvette

The ConFed Starship Morningstar is a *Fenris*-class heavy corvette designed for extended patrol and escort duties. It often operates alone as police ship and border patrol vessel. A common sight in civilized space, this class of warship is occasionally refitted for civilian use.

This progress-level six starship is approximately 100m long and can carry a crew of 30 (though it can be operated with far fewer personnel). It is armed with an array of laser turrets and missile launchers, as well as an intimidating spinal mounted cannon. With hangar bays on either side, there is ample room for a couple fighters, shuttles, or even more cargo space as needed.

The .zip file contains the following:

- Overview
 - 12 page PDF file detailing the ship, interior locations, and personnel.
 - Open Game License stats provided for the vessel, crew, and landing craft.
- Map Book
 - Full-color 31 page PDF file containing complete interior maps.
 - Miniature-scale maps for tactical combat.
 - Broken into pages for easy printing.
- Printer friendly, black and white version of the map book.
- Giant composite map image.
 - 150 dpi, color JPEG image. 36x61 inches.
 - Great for online applications.
- "Bonus Art" directory with exterior views of the ship and shuttle.

Starfinder stats, demo documents, and art are available free at **0-hr.com**

This first installment of *Future Armada* is meant to serve as a ready-made vessel for use by either players or game master. It can be easily adapted to other progress levels, or game systems. Add the Morningstar to your armada and bring the details of your sci-fi campaign to life!